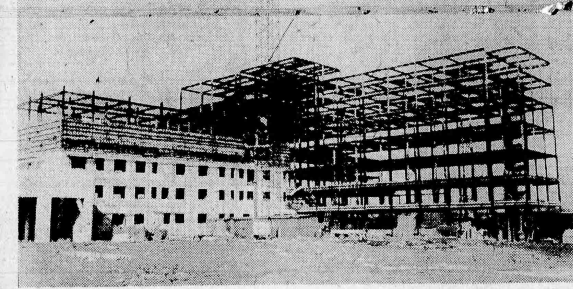


## Construction At Clara Maass Hospital



Construction of the new Clara Maass Memorial Hospital has been proceeding according to schedule during the past several months, and the steel framework for the new structure has been completely erected. The above picture shows a back view of the hospital construction. The rear wing (on the left of the picture) will house the Boiler Room, Laboratory, X-Ray Department and Delivery Room.

The patients' rooms (to the right on the picture) will provide modern, up-to-date accommodations. Most of the rooms will overlook Branch Brook Park. At the center of the building, the top stories will house machinery and elevator equipment.

## PRIMARY ELECTION FILLS 42 PARTY POSTS IN COUNTY

Republicans Have Two Contests, Democrats Four In April 17 Primary Vote

Belleville Democrats and Republicans will select 42 county committeemen and women from each party in the April 17 primary election. Although the majority of candidates in either party have already been selected by the county leadership, several races are still up to the decision of local voters.

On the Republican ticket, local voters will have two contested seats to fill, both in the fourth ward, second district. Eight new names appear on the ballot, with the remainder of the nominees being incumbents.

Democratic voters will have four contested seats to fill, two in the second ward and two in the fourth ward. Three new names appear on the ballot, with the remainder of the nominees being incumbents.

The complete breakdown follows:

Democratic	
Democratic: Ward 1, District 1, Frank Simone, Dorothy Estelle; District 2, John T. Costello, Ellen Sarnore; District 3, James V. Bissell, Eleanor Marinelli.	
Democratic: Ward 2, District 1, Horvath, Anna A. Roylean; District 2, Harry E. Ward, Anna Ward; District 3, Martin E. Mooney, Theresa O'Neill; District 4, Joseph Donnelly, Marion L. Walden.	
Republican	
Republican: Ward 1, District 1, John Hanley, Sue Pinter; District 2, Patrick F. Byrnes, Alice Spillars.	

(Continued On Page Two)

## Commission Suspends Tavern License; Heated Row Flares Over Zoning Issue

### Kiddie Ride Application Is Cause Of Furor

Near fistfights, townspeople marred Tuesday night's Town Commission meeting as Belleville Town fathers deliberated what action to take on an application requesting permission to install kiddie rides on a Washington Avenue property.

The application had been made to Commissioners by William A. Bortolucci, owner of the property at the last meeting and Commissioners had delayed action until this week's meeting pending a report by Town Attorney Lawrence Keenan. Mishkin wants to install the rides on his property at 701 Washington Avenue, presently known as the Riviera Park Skating Rink.

### Strongly Object

However, before Commissioners could take any action in the proposal, two citizens came forward to vehemently protest the measure. The two, Mrs. Louis Donato, of 172 Broad Street, and James R. Golden, of 62 Tappan Avenue, wanted to know why the matter came up before Commissioners prior to the Zoning Board of Adjustment ruling on the application of any existing zoning ordinance since the area in question was classified as a business zone. He further amplified the term kiddie rides, by describing a small outdoor carousel without music, which was less than 20 feet in diameter.

(Continued On Page Two)

### Ten Year Tax Tale

Because of the large number of inquiries received by the Times-News in regard to comparative tax rates of the past several years, a breakdown of the Belleville tax rate for the past ten years is being presented. The rate is divided into the municipal, school, and county shares for better overall comparison. The 1956 county figure and total is still tentative. It is interesting to note the large increase since 1945 when compared to the ten year tax jump.

Year	Town	School	County	Total
1946	3.12	3.28	1.52	7.92
1947	2.72	2.93	1.37	7.02
1948	2.95	3.11	1.16	6.32
1949	2.28	2.98	1.11	6.35
1950	2.25	2.97	1.04	6.26
1951	2.63	2.98	0.97	6.58
1952	2.06	2.58	0.93	5.57
1953	2.16	2.46	0.95	5.57
1954	2.05	2.50	0.89	5.44
1955	1.79	2.31	0.81	4.91
Ten Year Increase	1.33	0.97	0.71	3.01

### Hitching Post Loses Permit For Thirty Days

Belleville Town Commission Tuesday night suspended the liquor license of the Hitching Post, 200-212 Mill Street, for 30 days becoming effective midnight March 31. The license suspension followed a hearing on charges that the tavern had sold intoxicating beverages to two Newark minors this past Christmas night. One of the youths was subsequently involved in a hit-and-run accident in Newark which claimed the life of Mrs. Kathryn Leach, of 109 Overlook Avenue.

After an hour's Tuesday night, Commission members turned into a courtroom setting as Town Attorney Lawrence Keenan called upon two witnesses for the prosecution and Chester Ligham of East Orange, counsel for the defense, called upon four witnesses to testify in its behalf.

### Against Edwin Solek

The disciplinary procedures were taken against Edwin Solek, of Newark, owner of the Mill Street tavern since July, 1955. He had previously been connected with the Hitching Post since October, 1948. Upon questioning, Solek said the 30-day suspension was not entirely heavy in view of the fact this was a second offense against the same establishment. The first violation, in April, 1955, before Solek had assumed ownership, was punished by a 15-day license suspension.

After hearing conflicting testimony, Commissioners recessed for about 15 minutes before returning with the unanimous guilty verdict. Ligham indicated he would appeal the decision to the Alcoholic Beverage Control Board.

Only two witnesses appearing for the prosecution were the two youths charged with having been served in the tavern. The first boy, a 17-year-old Newark student, testified that he had been

(Continued On Page Two)

## Belleville Industry Opposes Golden Proposal For Business Profits Tax

### Plan Suggested As Attempt To Lower Tax Rate

The proposal for a business profits tax on industry in Belleville, made last week by James R. Golden, has met stiff opposition to date from local business and has been avoided by Belleville Town Commission. Golden made the suggestion at last week's public hearing on the 1956 municipal budget in an effort to find a solution to the town's rapidly rising tax rate.

However, Golden said that public sentiment on the issue could well force acceptance of the new business tax in spite of the out-and-out opposition of organized business. He said local manufacturers have enjoyed favorable rights too long at the expense of resident homeowners.

### First Proposed In 1952

Golden, a former Commission candidate and frequent critic of local government affairs, first proposed his measure to aid tax payers in a December, 1952, Town meeting. Then, and each succeeding year since his repeated requests for adoption of a business profit tax similar to one in effect in Trenton has been ignored by Town Commissioners.

Describing the concerted opposition of local manufacturers to any such proposal as "unintelligible in view of the favorable rights they have too long enjoyed at the expense of the homeowners," Golden contended this was the time to correct this inequitable abuse.

Golden pointed to the many facilities of the plan in Trenton. He said, "The reasoning that industry does not use many town facilities is more than compensated for by demands it imposes upon the public safety services of the community, both in augmented personnel and heavy duty equipment."

Golden cited the soaring local tax rate as almost "confiscatory," and implied that the saturation point has been reached in the share of individual homeowner may be reasonably expected to bear. "Some equitable broadening of the tax

(Continued On Page Two)

### Evan Thomas Leaves Hospital This Morning

Evan H. Thomas, Superintendent of Schools who suffered a heart attack on February 10, is leaving St. Barnabas Hospital, in Newark, this morning and is returning home. Both doctors and hospital authorities report Thomas' condition as very satisfactory.

Thomas has been making steady improvement for the past several weeks, doctors say, and has been sitting up and getting around the hospital.

Although Thomas will complete his convalescence at home, doctors said that he will be confined to the house for a time. His personal physician stated he was very well pleased with Thomas' improvement, but cautioned that the school head would have to take things easy for some time yet.

## CANCER WORKERS ON HOSPITAL TOUR

### Several Local Volunteers See Orange Memorial Center

Several local volunteers were among the 100 workers for the Essex County Chapter of the American Cancer Society who toured Orange Memorial Hospital last night to learn about the diagnostic and treatment facilities for cancer.

Arranged by the Chapter's education committee the tour was designed to inform campaign chairman and key leaders how cancer is being fought in hospitals. Included in the program were explanations of x-ray, operating room procedure, x-ray laboratory and the out-patient clinic. Each section of the tour was conducted by a physician associated with the hospital.

The purpose of the tour is for volunteers to relay cancer information to the community.

(Continued On Page Two)

### Manufacturing Represents 25% Of Tax Ratables

Belleville's industries have reacted strongly to the recent proposal that they pay higher taxes in order to lessen the burden of homeowners. The proposal, made by James R. Golden, has caused manufacturers to state they are already paying their way in the community's property tax, and that they will oppose any other kind of tax.

The consensus among 16 representatives of the larger industrial plants in town is that business interests are already paying enough taxes for the services they receive from the town. According to town tax assessor Arthur W. Clark, the plants represent from 20 to 25 per cent of the town's total tax payables, figures, real and personal property. The overall total of Belleville's taxables presently stands at \$2,353,000. The amount represented by industry was called "fairly high" by Clark.

Clark's opinion is that when municipal services rendered to industry for the taxes they pay are considered, the manufacturers bear a proportionally large amount of town costs. He said they receive no services in garbage collections, schools, or health. They pay the same rate of tax as a homeowner and get a fraction of what the town has to offer in return, Clark said.

Many industrial spokesmen said a profits tax is a good way to drive factories out of town. Others thought the tax would be unconstitutional. Some residents, however, pointed out that Trenton has imposed a similar tax upon its industries for several years. City officials there have reported

(Continued On Page Two)

## RED CROSS FUND APPEAL RAISES \$3,000 TO DATE

Chairman Harry J. Sullivan Says Figure Represents Only 12 Per Cent Of Quota

Only \$3,000 has been raised to date in the Red Cross fund raising campaign being conducted during the month of March, drive chairman Harry J. Sullivan reported today. The sum represents 12 per cent of the quota, Commissioner Sullivan said, with half the campaign period already past.

Drive leaders stated it was extremely vital that local quotas be met this year, because never in the 76 years history of the Red Cross has the organization been so low in resources. Financial reserves have been exhausted by the series of floods and other disasters in which the Red Cross offered extensive aid to those distressed persons. It was pointed out.

Commissioner Sullivan reported the following committees:

Industrial, Chairman Stanley G. Freck, Charles Shedd, William Bush, Charles H. Cortis, Norman D. Laurette, L. Silverman, William H. Cullen, Joseph J. Parker, John Harry J. Bore.

Commercial, Chairman Mrs. Lida Baker, Mrs. Emily Charrier, Dr. Donald S. Brown, Mrs. Marie Jorie Dunken, Mrs. Skinner, Mrs.

## Belleville Portrait Painted Over Radio Panel Interview

Belleville was recently saluted in a radio profile over Station WCRB, on "The Port of New York," sponsored by the Port of New York Authority. This community story was told by Mayor Isadore J. Padula; Willard Sawyer, production manager of Wallace & Tiernan, Inc., and president of the Belleville Manufacturers Association; Mrs. Violet Rochau, former president of the Board of education; Mrs. Edna Verhagen, active city leader and prominent Girl Scout leader and Connie Francis Television Singer and Recording Star.

CBS Commentator Martin Waldon opened the "Salute to Belleville" as another community in the greatest harbor area in the world and asked Mayor Padula to introduce Belleville. The Mayor described it in terms of location, population, area and boundaries. Discussing its problems and needs, Mayor Padula said: "Perhaps the most persistent challenge is holding down the tax rate, and at the same time supplying the community with every new service demanded. We do need new schools and new additions; teachers' salaries are going to be raised; and town employees will get raises this year, and of course that means

the tax rate must go up to meet these new demands. We are having a re-evaluation program at this time, also. That means an equalization of all the property in Belleville by an outside firm."

Belleville boasts of the finest collection of ballplayers, mainly New York Yankees, among its citizens present and recent. Mrs. Violet Rochau listed the following baseball stars as having been residents of Belleville at one time: Hank Bauer, Irv Noren, Chalk Mares, Vic Raschi, Joe Ostrowski, Tom Morgan, Slim Brown, and Gene Woodling. Mrs. Rochau then discussed Belleville's schools,

(Continued On Page Two)

## Cornerstone Laying Held At Ahavath Achim Sunday

### Congregation To Formally Dedicate Their New House Of Worship On Academy Street With An Afternoon Ritual And Dinner-Dance In Evening

Members of Congregation Ahavath Achim will formally dedicate their new House of Worship this Sunday afternoon in a cornerstone laying ceremony. Although the Temple has been occupied since this past fall, Sunday's ceremony will mark the actual completion of the edifice, congregational leader Rabbi Albert L. Raab stated.

Municipal dignitaries and neighboring clergymen will be present at the ceremony to express their best wishes to the congregation in their new House of Worship.

Ground was broken for the new Temple in May, 1954, and the building was first occupied this past September in observance of the Jewish New Year. At that time, a formal procession transferred the Holy Scrolls from the old Temple on Washington Avenue to the new building on Academy Street. Work has since continued to put the finishing touches on the edifice.

### Start At 2:30

Sunday's ceremony will begin at 2:30 in the afternoon according to Rabbi Raab. A special dinner in the evening will be held in the Temple's recreation hall.

Chairman of the day's activities is Seymour Perako. Scheduled to deliver the invocation is Rabbi Jehoshua Schmitzer, of Montclair, vice president of the Essex County Board of Rabbis. Greetings will be delivered by Charles Rosenberg, president of the congregation, and Mayor Isadore J. Padula.

Acknowledgments will then be extended to Town Commissioners and other visiting dignitaries present. Greetings will be delivered by Judge Edward J. Abrenson and Rabbi Morris Werb, of Caldwell, president of the Essex County Board of Rabbis. Further acknowledgments will then be extended to presidents of neighboring con-

(Continued On Page Two)

## BOARD VETOES LICENSE TRANSFER

### Commission Hears Arvidson Make Playground Suggestions

Belleville Town Commissioners Tuesday night heard a protest from Thomas Byrne, executive secretary of the New Jersey State Tavern Owners Association, requesting that Commissioners go on record as opposing the transfer of the state liquor license held by the Cumberland Beverage Company of Vineland, to Belleville. Town fathers received notice from the Alcoholic Beverage Control Board that the transfer was pending before that group, and were asked for a local stand on the matter.

Byrne presented a petition to Commissioners signed by 80 residents who are opposed to the license transfer. Although the Cumberland Beverage Company is primarily a wholesale concern, and would operate only a warehouse in town, it was felt the local tavern owners would be affected by the addition.

In a similar case last year, Commissioners voted to deny the transfer of the license to the town.

(Continued On Page Two)

## GIRL SCOUTS TO HAVE OWN CABIN ON RESERVATION

Plans for construction of a Girl Scout cabin in South Mountain Reservation were announced this week by Mrs. Walter Finch, Belleville Council, Girl Scouts of America.

William A. Boyd, architect, has submitted plans for a cabin designed to accommodate 25 Scouts for sleeping, with large play areas and fireplace indoors. The cabin will be used primarily for troop camping. According to Mrs. Finch, construction will begin as soon as final approval of the plans is received by the Essex County Park Commission. Ground will probably be broken this Spring, she said.

The original Belleville Girl Scout cabin burned in 1950.

## Spot Yourself At 1930 Wesley Church Banquet



Residents are invited to indulge in a bit of nostalgia by trying to find themselves in this picture of the annual banquet of the Epworth League of Wesley Methodist Church. It was snapped May 6, 1930. The Times-News publishes it through the courtesy of Allen H. Crisp, of 238 New Street. The Epworth League was a young people's club and a forerunner of the Wesley Youth Fellowship, organized in 1940. Rev. Edgar M. Compton was pastor at Wesley when this photo was taken.

## The Face Is Familiar: Scouts Remain First Love After 28 Years With Troop

Mrs. Edna Verhagen, of 103 Washington Avenue, has been guiding Girl Scouts at the Belleville Reformed Church for 28 years. She is leader of Intermediate and Senior Troops Nine, assisted by Misses Barbara Healy, Judy Knodel, Jacqueline Danek, and Mrs. Daniel Tobin.

The Senior Troop is the only one in Belleville, organized 17 years ago by Mrs. Verhagen when senior scouting was formed nationally. The seniors are high school students who serve as hospital aides and are trained to become assistant leaders.

The mother of two, Deane and Edward, Mrs. Verhagen is also active in the Belleville Reformed Church where she serves as soprano soloist and superintendent of the confirmation class in the Sunday School. She is also treasurer of the church missionary choir; director of the Junior



Photo by Konrad  
Mrs. Edna Verhagen

(Continued On Page Two)



FEDERAL HONORS VETERAN WORKERS

Richard J. Sepe, 158 Cedar Hill Avenue, was formally admitted to the Southern Bell Chapter, P. O. Box 100, at the chapter's fourth annual dinner in the Hotel Sutherland, last evening, last night. Sepe is an outside expeditor with the company. The chapter is composed of 39 employees of Southern Bell Telephone and Telegraph Company, eleven of whom have completed 25 years or more of service. It is named for Colonel Stephen Bell, chairman of the board, IT & T, and a founder of that corporation. As symbols of their membership, each of the employees taken into the group received a silver pin in a 25-year service pin. The presentations were made by R. S. Perry, Federal president.

OFFICER ELECTION AT SCHOOL SEVEN

Mrs. Sidney Biagan was elected president of the School Seven Parent-Teacher Association. Other officers include Joseph Grosch, vice president; Seymour Grossman, second vice president; Mrs. Thelma Anger, recording secretary; Mrs. Mary Perez, corresponding secretary; and Mrs. Edward Dufrenoy, treasurer. All the members of the association are women.

A talk on children dance was given by Nicholas Mausele.

Janice Barra, Elaine Grippa, and Carol Hattner, all of the school, were elected to the committee to plan the next dance.

Under the Double Eagle March were played by Janet Biagan.

Four other alternates chosen by Rep. Rodino are: Second, James E. Graham, of 202 Second Place; Third, Charles R. Ellison, Jr., of 716 Warren Street; Fourth, Ralph Galdo, of 101 Second Street, Newark; and Fifth, J. Thaddeus Zwick, of 11 Mount Vernon Avenue, Bloomfield.

There was an attendance of 410 fathers and sons.

Portrait

stressing the need for new ones by explaining the fine programs now in existence.

One of the girls who is going places in the music field, is a recent graduate of Belleville High School, who has appeared with Martin and Lewis, Arthur Godfrey and Milton Berle. Her recording of "I Love You Love" was played on the broadcast. Mrs. Francis then spoke of Belleville High School, where she learned much and participated in many activities, all of which are helpful to her today. "I had a chance to see the inside of a show and take part in the show," she said. "I was in the schools you just don't get this kind of experience. There was one show that we put on called 'Crazy Capers,' which I wrote and then produced, and we auditioned people for it. It was really a wonderful experience, because I not only took part in the show as far as the talent part is concerned, but I also designed the sets."

General Welfare

Stressing the strong spiritual trend in Belleville, Mrs. Verhagen listed and described some of the nine churches scattered throughout the town. In addition to giving much attention to Girl scout activities, Belleville participates actively in many other community activities for the general welfare. May Padula described some of these: "We have a new Cerebral Palsy Center and Treatment Center in Belleville to which the citizens contribute both time and money. We also have the new Clara Maass Hospital, located in Belleville and hope to see it ready for use early next year. The quota for Belleville this inter-community project was \$50,000. We have no doubt about meeting it, and when the hospital is finished, more volunteer workers will join the many Belleville women who are already members of the hospital's auxiliary. The Kessler Institute for Rehabilitation of the Physically Handicapped is another of the many hospitals which have been aided by fund drives in Belleville."

Along similar lines, an institution known as the Belleville Foundation makes a mighty contribution to the life of the town. Mrs. Sawyer reported on this organization: "This is a public-spirited group organized by officers, general public, representatives of the

RODINO APPOINTS BELLEVILLE YOUTH TO NAVAL ACADEMY

Congressman Peter W. Rodino, Jr., announced in Washington, last night, his designation of Robert L. Towle, 17, of 1 Beverly Court, as his principal candidate, and Paul J. Burke, of 96 Stanley Avenue, Nutley, as his first alternate for appointment to the U. S. Naval Academy at Annapolis, Md., next year. They topped a field in competitive examinations last July.

As symbols of their membership, each of the employees taken into the group received a silver pin in a 25-year service pin. The presentations were made by R. S. Perry, Federal president.

Red Cross

Harry Fellman, Mrs. Marge Malison, Mrs. William Abramson, Mrs. Clifford White, Mrs. Angelina Bruno, Sunny Strand, Mrs. Douglas Wadsworth, Mrs. A. Anderson, Special Clerk, C. M. G. H. Horsfield, Thomas C. Gryzka, Dr. George P. Worthington, Larry K. Keenan, William C. Smith, Apartments, Chairman Robert C. Graham, Essex Co. Hospital, Chairman, Belleville, also announced the following new leaders in the residential zone: Mrs. Sidney Biagan, Mrs. William Padula, Mrs. Edward J. Dufrenoy, Mrs. Thelma Anger, Mrs. Mary Perez, Mrs. Mary Grossman, Mrs. Charles Kessels.

Capitalists in the residential drive were: Mrs. M. Bennett, Mrs. Winifred Tucker, Mrs. Elsie Lusk.

The Nulley alternate is a son of Colonel and Mrs. Paul L. Burke, formerly of Stanley Avenue, who are now in Virginia. Colonel Burke is stationed at Camp A. P. Salvo, La. Mrs. Burke played a trumpet solo.

Gary Colehamer, from School Three, and Kenneth Vity, from School Two, were elected to the committee to plan the next dance.

Under the Double Eagle March were played by Janet Biagan.

Four other alternates chosen by Rep. Rodino are: Second, James E. Graham, of 202 Second Place; Third, Charles R. Ellison, Jr., of 716 Warren Street; Fourth, Ralph Galdo, of 101 Second Street, Newark; and Fifth, J. Thaddeus Zwick, of 11 Mount Vernon Avenue, Bloomfield.

There was an attendance of 410 fathers and sons.

Portrait

stressing the need for new ones by explaining the fine programs now in existence.

One of the girls who is going places in the music field, is a recent graduate of Belleville High School, who has appeared with Martin and Lewis, Arthur Godfrey and Milton Berle. Her recording of "I Love You Love" was played on the broadcast. Mrs. Francis then spoke of Belleville High School, where she learned much and participated in many activities, all of which are helpful to her today. "I had a chance to see the inside of a show and take part in the show," she said. "I was in the schools you just don't get this kind of experience. There was one show that we put on called 'Crazy Capers,' which I wrote and then produced, and we auditioned people for it. It was really a wonderful experience, because I not only took part in the show as far as the talent part is concerned, but I also designed the sets."

General Welfare

Stressing the strong spiritual trend in Belleville, Mrs. Verhagen listed and described some of the nine churches scattered throughout the town. In addition to giving much attention to Girl scout activities, Belleville participates actively in many other community activities for the general welfare. May Padula described some of these: "We have a new Cerebral Palsy Center and Treatment Center in Belleville to which the citizens contribute both time and money. We also have the new Clara Maass Hospital, located in Belleville and hope to see it ready for use early next year. The quota for Belleville this inter-community project was \$50,000. We have no doubt about meeting it, and when the hospital is finished, more volunteer workers will join the many Belleville women who are already members of the hospital's auxiliary. The Kessler Institute for Rehabilitation of the Physically Handicapped is another of the many hospitals which have been aided by fund drives in Belleville."

Along similar lines, an institution known as the Belleville Foundation makes a mighty contribution to the life of the town. Mrs. Sawyer reported on this organization: "This is a public-spirited group organized by officers, general public, representatives of the

EVER READY CORP. SETS SCHOLARSHIP

A four-year full tuition scholarship has been established in the Carnegie Tech School of Printing Management, Pittsburgh, by the Ever Ready Label Corporation of Belleville, it was announced today. Sponsor of the scholarship is Herman Hollander, president of the corporation, who is a 1948 printing management graduate from Carnegie.

Called the Sidney Hollander Memorial Award, the scholarship will go to Herman Hollander, father who founded the Ever Ready Corporation.

Agenda will be granted by a faculty committee on the basis of scholastic achievement and financial need. The first award is expected to be made by the fall of 1956.

Red Cross

Harry Fellman, Mrs. Marge Malison, Mrs. William Abramson, Mrs. Clifford White, Mrs. Angelina Bruno, Sunny Strand, Mrs. Douglas Wadsworth, Mrs. A. Anderson, Special Clerk, C. M. G. H. Horsfield, Thomas C. Gryzka, Dr. George P. Worthington, Larry K. Keenan, William C. Smith, Apartments, Chairman Robert C. Graham, Essex Co. Hospital, Chairman, Belleville, also announced the following new leaders in the residential zone: Mrs. Sidney Biagan, Mrs. William Padula, Mrs. Edward J. Dufrenoy, Mrs. Thelma Anger, Mrs. Mary Perez, Mrs. Mary Grossman, Mrs. Charles Kessels.

Capitalists in the residential drive were: Mrs. M. Bennett, Mrs. Winifred Tucker, Mrs. Elsie Lusk.

The Nulley alternate is a son of Colonel and Mrs. Paul L. Burke, formerly of Stanley Avenue, who are now in Virginia. Colonel Burke is stationed at Camp A. P. Salvo, La. Mrs. Burke played a trumpet solo.

Gary Colehamer, from School Three, and Kenneth Vity, from School Two, were elected to the committee to plan the next dance.

Under the Double Eagle March were played by Janet Biagan.

Four other alternates chosen by Rep. Rodino are: Second, James E. Graham, of 202 Second Place; Third, Charles R. Ellison, Jr., of 716 Warren Street; Fourth, Ralph Galdo, of 101 Second Street, Newark; and Fifth, J. Thaddeus Zwick, of 11 Mount Vernon Avenue, Bloomfield.

There was an attendance of 410 fathers and sons.

Portrait

stressing the need for new ones by explaining the fine programs now in existence.

One of the girls who is going places in the music field, is a recent graduate of Belleville High School, who has appeared with Martin and Lewis, Arthur Godfrey and Milton Berle. Her recording of "I Love You Love" was played on the broadcast. Mrs. Francis then spoke of Belleville High School, where she learned much and participated in many activities, all of which are helpful to her today. "I had a chance to see the inside of a show and take part in the show," she said. "I was in the schools you just don't get this kind of experience. There was one show that we put on called 'Crazy Capers,' which I wrote and then produced, and we auditioned people for it. It was really a wonderful experience, because I not only took part in the show as far as the talent part is concerned, but I also designed the sets."

General Welfare

Stressing the strong spiritual trend in Belleville, Mrs. Verhagen listed and described some of the nine churches scattered throughout the town. In addition to giving much attention to Girl scout activities, Belleville participates actively in many other community activities for the general welfare. May Padula described some of these: "We have a new Cerebral Palsy Center and Treatment Center in Belleville to which the citizens contribute both time and money. We also have the new Clara Maass Hospital, located in Belleville and hope to see it ready for use early next year. The quota for Belleville this inter-community project was \$50,000. We have no doubt about meeting it, and when the hospital is finished, more volunteer workers will join the many Belleville women who are already members of the hospital's auxiliary. The Kessler Institute for Rehabilitation of the Physically Handicapped is another of the many hospitals which have been aided by fund drives in Belleville."

Along similar lines, an institution known as the Belleville Foundation makes a mighty contribution to the life of the town. Mrs. Sawyer reported on this organization: "This is a public-spirited group organized by officers, general public, representatives of the

"Salute To Belleville" Panel Members



Members of the panel participating in the "Salute to Belleville" radio show sponsored by the Port of New York Authority and broadcast Saturday, March 3, over WCBR, are, seated from left to right: Mrs. Violet Rychau, former president of the Board of Education; Mrs. Edna Verhagen, active civic leader and prominent Girl Scout Leader; Mayor Isadore J. Padula; Willard Sawyer, president of the Belleville Manufacturers Association and Production Manager of Wallace & Tiernan, Inc. Standing, Anthony F. Mauriello, Port Authority Community Program Supervisor, left; and CBS Moderator Martin Waldon. Miss Connie Francis, television singer and recording star, who participated in the broadcast, does not appear in the photograph.

Scouts

Frank Taffet, oldest living past president will also participate in the ceremony, as will Nathan H. Weiss, chairman of the Board of Trustees.

A prayer will be offered for all departed past presidents of the congregation, and all living past presidents will then participate in the actual laying of the cornerstone, led by Samuel J. Kogan.

The dinner in the evening will get underway at 6:15 with a cocktail hour. Dinner will be served at 7:30. Rabbi Raab and Robert C. Gruhn will both speak, following remarks by Charles Rosenberg, Seymour Perko, and Mrs. Louis Sussman, national president of the Women's League of the United Synagogue of America.

Dancing will follow to the music of Bob Fairbanks and his orchestra.

Lester N. Robinson, a Newark school teacher who was in the town at the time of its incorporation, testified that he recalled the two boys being in the bar but could not recall what they had been drinking. He said the bartender had made a remark to him about checking credentials, however.

Cornerstone

gregations and clergy attending. Congressman Peter W. Rodino, Jr., will make a few remarks, after which Dr. Benjamin A. Jacobson will be introduced to conduct the ritual of laying the cornerstone.

Placing papers in the cornerstone will be Rosenberg on behalf of the congregation; Mrs. Stanley Sobelson, Sisterhood president; Louis Lemper, Progress Club president; and representatives of the Hebrew School, Boy Scouts, and Girl Scouts.

Hitching Post

served three or four beers there the night of December 25, 1955. He claimed he had not been asked for identification or for proof of his age. The youth was able to identify the bartender, who was called before him, as Caesar Manero, 34, of 34 Clinton Avenue.

The second youth, an 18-year-old Newark boy, who is a student at Seton Hall University, testified that the two boys met early in the evening and went to the Hitching Post where they were served beers without any question. Upon cross examination, he stated that he had positively not had a "cock" there.

Manero Part-Time Employee. The first witness for the defense was Solek, the owner, who testified that he had positively not had a "cock" there.

LET US SOLVE YOUR ELECTRICAL PROBLEMS. Outlets, Switches, New Homes Wired, Old Homes Rewired. MOTOR PROBLEMS.

LARSON'S ELECTRIC SERVICE. 658 Belleville Ave., Belleville, N. J. Call after 5 P. M. PL 9-3222

Income Tax Returns

PREPARED In Your Home Or Mine. JOHN D. SIMON. 31 Melwex Street, Belleville. For Appointment. Call PL 9-1597 Between 6 and 10 P. M.

WADSWORTH Funeral Home

524 Union Avenue, Belleville 9, New Jersey. F. Douglas Wadsworth. PL 9-2879. Services within the financial circumstances of ALL. Non-Sectarian. MAY WE HELP YOU, IN YOUR TIME OF NEED.

WADSWORTH Funeral Home

524 Union Avenue, Belleville 9, New Jersey. F. Douglas Wadsworth. PL 9-2879. Services within the financial circumstances of ALL. Non-Sectarian. MAY WE HELP YOU, IN YOUR TIME OF NEED.

WADSWORTH Funeral Home

524 Union Avenue, Belleville 9, New Jersey. F. Douglas Wadsworth. PL 9-2879. Services within the financial circumstances of ALL. Non-Sectarian. MAY WE HELP YOU, IN YOUR TIME OF NEED.

WADSWORTH Funeral Home

524 Union Avenue, Belleville 9, New Jersey. F. Douglas Wadsworth. PL 9-2879. Services within the financial circumstances of ALL. Non-Sectarian. MAY WE HELP YOU, IN YOUR TIME OF NEED.

WADSWORTH Funeral Home

524 Union Avenue, Belleville 9, New Jersey. F. Douglas Wadsworth. PL 9-2879. Services within the financial circumstances of ALL. Non-Sectarian. MAY WE HELP YOU, IN YOUR TIME OF NEED.

WADSWORTH Funeral Home

524 Union Avenue, Belleville 9, New Jersey. F. Douglas Wadsworth. PL 9-2879. Services within the financial circumstances of ALL. Non-Sectarian. MAY WE HELP YOU, IN YOUR TIME OF NEED.

WADSWORTH Funeral Home

524 Union Avenue, Belleville 9, New Jersey. F. Douglas Wadsworth. PL 9-2879. Services within the financial circumstances of ALL. Non-Sectarian. MAY WE HELP YOU, IN YOUR TIME OF NEED.

"Salute To Belleville" Panel Members



Members of the panel participating in the "Salute to Belleville" radio show sponsored by the Port of New York Authority and broadcast Saturday, March 3, over WCBR, are, seated from left to right: Mrs. Violet Rychau, former president of the Board of Education; Mrs. Edna Verhagen, active civic leader and prominent Girl Scout Leader; Mayor Isadore J. Padula; Willard Sawyer, president of the Belleville Manufacturers Association and Production Manager of Wallace & Tiernan, Inc. Standing, Anthony F. Mauriello, Port Authority Community Program Supervisor, left; and CBS Moderator Martin Waldon. Miss Connie Francis, television singer and recording star, who participated in the broadcast, does not appear in the photograph.

Scouts

Frank Taffet, oldest living past president will also participate in the ceremony, as will Nathan H. Weiss, chairman of the Board of Trustees.

A prayer will be offered for all departed past presidents of the congregation, and all living past presidents will then participate in the actual laying of the cornerstone, led by Samuel J. Kogan.

The dinner in the evening will get underway at 6:15 with a cocktail hour. Dinner will be served at 7:30. Rabbi Raab and Robert C. Gruhn will both speak, following remarks by Charles Rosenberg, Seymour Perko, and Mrs. Louis Sussman, national president of the Women's League of the United Synagogue of America.

Dancing will follow to the music of Bob Fairbanks and his orchestra.

Lester N. Robinson, a Newark school teacher who was in the town at the time of its incorporation, testified that he recalled the two boys being in the bar but could not recall what they had been drinking. He said the bartender had made a remark to him about checking credentials, however.

Cornerstone

gregations and clergy attending. Congressman Peter W. Rodino, Jr., will make a few remarks, after which Dr. Benjamin A. Jacobson will be introduced to conduct the ritual of laying the cornerstone.

Placing papers in the cornerstone will be Rosenberg on behalf of the congregation; Mrs. Stanley Sobelson, Sisterhood president; Louis Lemper, Progress Club president; and representatives of the Hebrew School, Boy Scouts, and Girl Scouts.

Hitching Post

served three or four beers there the night of December 25, 1955. He claimed he had not been asked for identification or for proof of his age. The youth was able to identify the bartender, who was called before him, as Caesar Manero, 34, of 34 Clinton Avenue.

The second youth, an 18-year-old Newark boy, who is a student at Seton Hall University, testified that the two boys met early in the evening and went to the Hitching Post where they were served beers without any question. Upon cross examination, he stated that he had positively not had a "cock" there.

Manero Part-Time Employee. The first witness for the defense was Solek, the owner, who testified that he had positively not had a "cock" there.

LET US SOLVE YOUR ELECTRICAL PROBLEMS. Outlets, Switches, New Homes Wired, Old Homes Rewired. MOTOR PROBLEMS.

LARSON'S ELECTRIC SERVICE. 658 Belleville Ave., Belleville, N. J. Call after 5 P. M. PL 9-3222

Income Tax Returns

PREPARED In Your Home Or Mine. JOHN D. SIMON. 31 Melwex Street, Belleville. For Appointment. Call PL 9-1597 Between 6 and 10 P. M.

WADSWORTH Funeral Home

524 Union Avenue, Belleville 9, New Jersey. F. Douglas Wadsworth. PL 9-2879. Services within the financial circumstances of ALL. Non-Sectarian. MAY WE HELP YOU, IN YOUR TIME OF NEED.

WADSWORTH Funeral Home

524 Union Avenue, Belleville 9, New Jersey. F. Douglas Wadsworth. PL 9-2879. Services within the financial circumstances of ALL. Non-Sectarian. MAY WE HELP YOU, IN YOUR TIME OF NEED.

WADSWORTH Funeral Home

524 Union Avenue, Belleville 9, New Jersey. F. Douglas Wadsworth. PL 9-2879. Services within the financial circumstances of ALL. Non-Sectarian. MAY WE HELP YOU, IN YOUR TIME OF NEED.

WADSWORTH Funeral Home

524 Union Avenue, Belleville 9, New Jersey. F. Douglas Wadsworth. PL 9-2879. Services within the financial circumstances of ALL. Non-Sectarian. MAY WE HELP YOU, IN YOUR TIME OF NEED.

WADSWORTH Funeral Home

524 Union Avenue, Belleville 9, New Jersey. F. Douglas Wadsworth. PL 9-2879. Services within the financial circumstances of ALL. Non-Sectarian. MAY WE HELP YOU, IN YOUR TIME OF NEED.

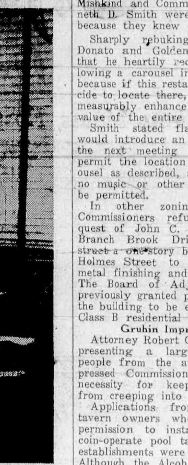
WADSWORTH Funeral Home

524 Union Avenue, Belleville 9, New Jersey. F. Douglas Wadsworth. PL 9-2879. Services within the financial circumstances of ALL. Non-Sectarian. MAY WE HELP YOU, IN YOUR TIME OF NEED.

WADSWORTH Funeral Home

524 Union Avenue, Belleville 9, New Jersey. F. Douglas Wadsworth. PL 9-2879. Services within the financial circumstances of ALL. Non-Sectarian. MAY WE HELP YOU, IN YOUR TIME OF NEED.

"Salute To Belleville" Panel Members



Members of the panel participating in the "Salute to Belleville" radio show sponsored by the Port of New York Authority and broadcast Saturday, March 3, over WCBR, are, seated from left to right: Mrs. Violet Rychau, former president of the Board of Education; Mrs. Edna Verhagen, active civic leader and prominent Girl Scout Leader; Mayor Isadore J. Padula; Willard Sawyer, president of the Belleville Manufacturers Association and Production Manager of Wallace & Tiernan, Inc. Standing, Anthony F. Mauriello, Port Authority Community Program Supervisor, left; and CBS Moderator Martin Waldon. Miss Connie Francis, television singer and recording star, who participated in the broadcast, does not appear in the photograph.

Scouts

Frank Taffet, oldest living past president will also participate in the ceremony, as will Nathan H. Weiss, chairman of the Board of Trustees.

A prayer will be offered for all departed past presidents of the congregation, and all living past presidents will then participate in the actual laying of the cornerstone, led by Samuel J. Kogan.

The dinner in the evening will get underway at 6:15 with a cocktail hour. Dinner will be served at 7:30. Rabbi Raab and Robert C. Gruhn will both speak, following remarks by Charles Rosenberg, Seymour Perko, and Mrs. Louis Sussman, national president of the Women's League of the United Synagogue of America.

Dancing will follow to the music of Bob Fairbanks and his orchestra.

Lester N. Robinson, a Newark school teacher who was in the town at the time of its incorporation, testified that he recalled the two boys being in the bar but could not recall what they had been drinking. He said the bartender had made a remark to him about checking credentials, however.

Cornerstone

gregations and clergy attending. Congressman Peter W. Rodino, Jr., will make a few remarks, after which Dr. Benjamin A. Jacobson will be introduced to conduct the ritual of laying the cornerstone.

Placing papers in the cornerstone will be Rosenberg on behalf of the congregation; Mrs. Stanley Sobelson, Sisterhood president; Louis Lemper, Progress Club president; and representatives of the Hebrew School, Boy Scouts, and Girl Scouts.

Hitching Post

served three or four beers there the night of December 25, 1955. He claimed he had not been asked for identification or for proof of his age. The youth was able to identify the bartender, who was called before him, as Caesar Manero, 34, of 34 Clinton Avenue.

The second youth, an 18-year-old Newark boy, who is a student at Seton Hall University, testified that the two boys met early in the evening and went to the Hitching Post where they were served beers without any question. Upon cross examination, he stated that he had positively not had a "cock" there.

Manero Part-Time Employee. The first witness for the defense was Solek, the owner, who testified that he had positively not had a "cock" there.

LET US SOLVE YOUR ELECTRICAL PROBLEMS. Outlets, Switches, New Homes Wired, Old Homes Rewired. MOTOR PROBLEMS.

LARSON'S ELECTRIC SERVICE. 658 Belleville Ave., Belleville, N. J. Call after 5 P. M. PL 9-3222

Income Tax Returns

PREPARED In Your Home Or Mine. JOHN D. SIMON. 31 Melwex Street, Belleville. For Appointment. Call PL 9-1597 Between 6 and 10 P. M.

WADSWORTH Funeral Home

524 Union Avenue, Belleville 9, New Jersey. F. Douglas Wadsworth. PL 9-2879. Services within the financial circumstances of ALL. Non-Sectarian. MAY WE HELP YOU, IN YOUR TIME OF NEED.

WADSWORTH Funeral Home

524 Union Avenue, Belleville 9, New Jersey. F. Douglas Wadsworth. PL 9-2879. Services within the financial circumstances of ALL. Non-Sectarian. MAY WE HELP YOU, IN YOUR TIME OF NEED.

WADSWORTH Funeral Home

524 Union Avenue, Belleville 9, New Jersey. F. Douglas Wadsworth. PL 9-2879. Services within the financial circumstances of ALL. Non-Sectarian. MAY WE HELP YOU, IN YOUR TIME OF NEED.

WADSWORTH Funeral Home

524 Union Avenue, Belleville 9, New Jersey. F. Douglas Wadsworth. PL 9-2879. Services within the financial circumstances of ALL. Non-Sectarian. MAY WE HELP YOU, IN YOUR TIME OF NEED.

WADSWORTH Funeral Home

524 Union Avenue, Belleville 9, New Jersey. F. Douglas Wadsworth. PL 9-2879. Services within the financial circumstances of ALL. Non-Sectarian. MAY WE HELP YOU, IN YOUR TIME OF NEED.

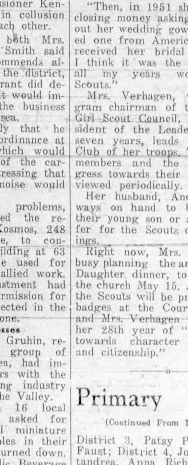
WADSWORTH Funeral Home

524 Union Avenue, Belleville 9, New Jersey. F. Douglas Wadsworth. PL 9-2879. Services within the financial circumstances of ALL. Non-Sectarian. MAY WE HELP YOU, IN YOUR TIME OF NEED.

WADSWORTH Funeral Home

524 Union Avenue, Belleville 9, New Jersey. F. Douglas Wadsworth. PL 9-2879. Services within the financial circumstances of ALL. Non-Sectarian. MAY WE HELP YOU, IN YOUR TIME OF NEED.

"Salute To Belleville" Panel Members



Members of the panel participating in the "Salute to Belleville" radio show sponsored by the Port of New York Authority and broadcast Saturday, March 3, over WCBR, are, seated from left to right: Mrs. Violet Rychau, former president of the Board of Education; Mrs. Edna Verhagen, active civic leader and prominent Girl Scout Leader; Mayor Isadore J. Padula; Willard Sawyer, president of the Belleville Manufacturers Association and Production Manager of Wallace & Tiernan, Inc. Standing, Anthony F. Mauriello, Port Authority Community Program Supervisor, left; and CBS Moderator Martin Waldon. Miss Connie Francis, television singer and recording star, who participated in the broadcast, does not appear in the photograph.

Scouts

Frank Taffet, oldest living past president will also participate in the ceremony, as will Nathan H. Weiss, chairman of the Board of Trustees.

A prayer will be offered for all departed past presidents of the congregation, and all living past presidents will then participate in the actual laying of the cornerstone, led by Samuel J. Kogan.

The dinner in the evening will get underway at 6:15 with a cocktail hour. Dinner will be served at 7:30. Rabbi Raab and Robert C. Gruhn will both speak, following remarks by Charles Rosenberg, Seymour Perko, and Mrs. Louis Sussman, national president of the Women's League of the United Synagogue of America.

Dancing will follow to the music of Bob Fairbanks and his orchestra.

Lester N. Robinson, a Newark school teacher who was in the town at the time of its incorporation, testified that he recalled the two boys being in the bar but could not recall what they had been drinking. He said the bartender had made a remark to him about checking credentials, however.

Cornerstone

gregations and clergy attending. Congressman Peter W. Rodino, Jr., will make a few remarks, after which Dr. Benjamin A. Jacobson will be introduced to conduct the ritual of laying the cornerstone.

Placing papers in



# Bon Voyage Party Launches Walter Schickram Into Navy

Walter Schickram, of 18 Smith Street, was guest of honor at a surprise party Friday night staged by friends to bid him farewell upon his induction into the Navy. The affair was given at the home of Miss Joan Sweigart, of 123 Oak Terrace. The guests included Misses Cathy Schwartz, Carol Conklin, Barbara Fitzpatrick, Jacqueline Verniero, Mary Lou Russell, Margaret Schultz, Dolores Scully and Pat Ryan, with Dan Clark, Mr. Andrews, Paul Hannan, Harry Bellane, Bill Benedict, Bob McCoy, Alan Budd, Pat Sommers, John Schickram, Paul Barrett and Rud Garbelly.

Miss Carol Wallace, daughter of Mr. and Mrs. M. S. Wallace, of 244 New Street, spent a "321 Weekend" recently at Intervale Farms, N. H. She is a student at Centenary Junior College, Hackensack.

Mrs. Louis K. Van Houten, of 428 Washington Avenue, celebrated her 80th birthday recently with a party at the Mayfair Farms, West Orange. Her guests were her brother-in-law and sister, Mr. and Mrs. George E. Lackey and their son, James, of West Orange; Mr. and Mrs. Edward Van Houten and daughter Barbara; Mr. and Mrs. Charles Zehnauer, Mrs. Chester Sager, and Mrs. Kastner, and Mrs. Kastner, of Nutley.

Mr. and Mrs. Kenneth G. Woods, of 71 High Street, are vacationing for two weeks at Sarasota, Fla.

Arlene Biancardi, daughter of Mr. and Mrs. Joseph Biancardi, of 10 King Place, will be the guest at a party tomorrow evening at The Concor, Livingston, in celebration of her sixteenth birthday. Miss Biancardi, who is a junior at Mount St. Dominic Academy, Camden, will have with her classmates at the school and their escorts in her party, Congressman Peter Rodino, Jr., will also be among the guests.

Mrs. Ernest C. Reock, of Washington Avenue, will pour at a tea following the Youth Fine Arts day exhibition sponsored by the Contemporary Club of Newark Tuesday at 1 p.m.

Mrs. Lillian Gilson, of Belleville and Mrs. Elizabeth Hess, of Nutley, are enjoying a visit to St. Petersburg, Fla.

Mr. and Mrs. Carl G. Haroldson, of 27 Forest Street, and their son, Mr. Alfred H. Haroldson, spent the weekend in Springfield, Pa., at the home of Mr. and Mrs. Robert Cato.

March winds won't bother Mrs. Helen B. Wolf, of 130 Fort Street, who will fly Monday with Mrs. Cecil O'Toole, of 11 Cleveland Street, for a week in Miami Beach.

Members of Belleville-Nutley Hadassah donned their Easter bonnets a few weeks early to attend the Northern New Jersey Chapter of Hadassah luncheon Tuesday at the Waldorf-Astoria.

Marion Delcorso, of 431 Cortlandt Street, will be hostess April 13, at a party marking her sixteenth birthday. Eight couples will be on hand to make it a happy affair for the BHS sophomore.

Peter Michael Walk, son of Mr. and Mrs. Alfred H. Walk, of 211 Adelaide Street, will celebrate his Bar Mitzvah tomorrow at Temple B'nai Israel, Nutley. Peter is the grandson of the late Phillip M. Raskin, noted Anglo-Jewish poet, and Mrs. Raskin, of New York City, and of Mr. and Mrs. Isaac Wolf, of Miami Beach.

Mr. and Mrs. William Long, of 219 New Street, arrived home Sunday after a few weeks in Anna Maria Island, Fla.

Mrs. E. A. Garney, of 17 Mar Court, has been appointed reservations chairman for Belleville for the membership tea Wednesday of the Women's Auxiliary of Cerebral Palsy of Essex and West Hudson. The tea will be held at the CP Center, 7 Sandford Avenue. Mrs. Steven Bojczak of Belleville, will preside at the tea table.

A surprise bridal shower was held Tuesday night at the home of Mr. and Mrs. Carmen Sylvester, of 440 Greylock Parkway, in honor of Miss Rita Giordano, daughter of Mr. and Mrs. Al Giordano, of 21 Smith Street. The party was given by Mrs. Mario Sylvester, mother of Miss Giordano's fiancé. More than 100

# LENNING CLUB TO ELECT OFFICERS

Election of officers will be held at the Evening Membership Department of the Women's Club, 51 Rossmore Place, at 8:15 p.m.

More than \$100, proceeds from the recent auction sponsored by the club, has been turned over to the Alfred Hall Meese Nursery, Totowa, for equipping a laboratory for research and diagnosis of mental retardation.

Local members attended the spring conference of the Evening Membership departments of the eighth and eleventh districts held Tuesday at the Rutherford Women's Club.

An appeal is still being made to members to donate discarded eye glasses for "New Eyes for the Needy, Inc."

# Grace Church Goodwill Plans Rummage Sale

A rummage sale will be sponsored next Friday, March 23, by the Goodwill Circle of Grace Baptist Church in the church basement.

Donations will be offered for sale from 10 a.m. to 3 p.m.

# Mary Ann Wysocki Church Bride of Kenneth D. Halbert



Mrs. Kenneth Daniel Halbert

Wesley Methodist Church was the setting on Saturday, at 11 o'clock in the morning, of the wedding of Miss Mary Ann Wysocki, of 386 Stephens Street, to Kenneth Daniel Halbert, of 74 Cathedral Avenue, Nutley. The ceremony was performed by Rev. Clifford Hewitt, pastor of the church. A reception was given at the Essex House, in Newark.

The bride is the daughter of Mr. and Mrs. Lee Wysocki. The bridegroom is the son of Mr. and Mrs. Daniel Halbert.

Mrs. Robert M. Williams, of Nutley, was the matron of honor. The bride's other attendants were Mrs. Myra Kapra, of Belleville and Miss Mary Ann Shea, of Arlington.

Richard Friend, of Hackensack, served as the best man. The ushers were Warren Gross, of Hackensack; Richard Amann, of West Caldwell and Michael A. Wysocki, of Belleville.

The bride is a graduate of the Berkeley School, in East Orange. Her husband's graduate of the University of Wisconsin, took his master's degree at Columbia University. He is currently a graduate of the University of Wisconsin, in the US Navy.

After a wedding trip to Stowe, Vt., the couple will make their home in Lyndhurst.

# St. Peter's Is Host To N.C.C.W. Members

Msgr. Joseph M. Kelly, of St. Peter's Church, welcomed 25 affiliates of the National Council of Catholic Women at a meeting Monday in St. Peter's old school. Rev. Paul J. Hayes, assistant executive secretary of the National Legion of Decency, was guest speaker. Rt. Rev. Msgr. Thomas H. Powers, of Immaculate Conception Church, Montclair, also spoke.

Presiding at the tea table were Mrs. Edward W. Costenbader, president of the parish council, assisted by Miss Theresa Halpin, Mrs. John Sheridan, Mrs. Walter Walsh, Mrs. Maurice Conway, Mrs. William J. Long, Mrs. Myron Baron and Mrs. Jane Barnett.

# Sunday Is Ladies' Day At Everyman's Class

Everyman's Bible Class has held its Sunday class at the home of Harold Schuyler, of Hackensack, who is the guest saint. The service will be held from 9:30 to 10:30 at the Masonic Temple.

# Robert Barnes Honored For Service With Pru

Robert N. Barnes, of 191 Forest Street, celebrated his 20th anniversary with the Prudential Insurance Co., Ltd., today. To mark the occasion, he will be presented a wrist watch and a testimonial letter signed by Prudential's President Carol M. Shanks.

# Can Conference 1 On Sunday At Holy Family

A Cana I conference will be held Sunday at 7 p.m. at Holy Family Church. Rev. Harold Gardner, of Blessed Sacrament Church, Newark, will conduct the conference. Invitations have been issued to 75 couples of the parish.

# SPRING MEETING OF WOMEN'S CLUBS SET IN IRVINGTON

The Federation of Women's Clubs Eighth District spring conference will be held Thursday at the First Congregational Church in Irvington, with the Women's Club of Irvington and the Suburban Women's Club of Irvington as hostesses clubs.

The morning session will begin at 10:15, followed by luncheon and the afternoon session will commence at 1:45.

Representing the Belleville Club will be Mrs. R. Clifford White, vice president of the eighth district; and Mrs. John DeNizio, secretary.

A feature of the conference will be an exhibit arranged by the district chairman, featuring the work of each department.

From Belleville will be Mrs. William T. Bryan, garden; Mrs. Elmer S. Hyde, literature; Mrs. Floyd M. Hacking, college; and Mrs. Arthur G. White, art department. The spring rummage sale of the club will be held next Friday, March 23, at the clubhouse from 9 a.m. to 3:30 p.m. and on March 24, from 9 a.m. to noon. Mrs. H. Irving Russell is in chairman.

# Miss DeNizio A Future Bride



Miss Virginia DeNizio

Mr. and Mrs. Anthony DeNizio, of 25 Arthur Street, announced the engagement of their daughter, Virginia, to Carmine Zanzanelli, of South Sixth Street, anelli, of South Sixth Street, Newark.

Miss DeNizio is a graduate of Fordham University, will be the guest speaker.

Mrs. James Madden is chairman of the event, with Mrs. Arthur Mohan, as co-chairman. They will be assisted by Mrs. Walter Lee, Mrs. Vincent Nappo, Mrs. George Derbysing, Mrs. Alvan Gentile, Mrs. Joseph Walcott and Mrs. Joseph V. Mulvihill.

Also: Mrs. John A. Kelly, Mrs. L. S. Killick, Mrs. James Mahoney, Mrs. G. F. Winterbottom, Mrs. Charles W. Greig, Mrs. William Motticia and Mrs. P. L. Aires.

# Scout Notes

By Ethel Moore

Brownie Troop 33 celebrated the 44th birthday of the Girl Scouts with a party on March 17 at the home of Mrs. J. J. Brownie. The girls contributed their pennies to the Juliet Low Fund which makes possible the sending of books to foreign countries and Scouts to International encampments. The following girls also celebrated their birthday: Betty Dangler, Joan Lafes, Diane Ostrowski and Carol Swain became nine years old. Diane gave a talk on the history of St. Patrick and decorations were on that theme. The meeting ended with the entire troop viewing the Neighborhood 1 Brownie window at Todd's Hardware.

Mrs. A. Veghte, assistant, and Mrs. Eiken are teaching the tenderfoot requirements to Brownies of Troop 23, Fawcitt Church. The following are eligible for this training: Kathy Auton, Bonnie Cook, Nancy DeBons, Linda Durkee, Betty Eiken, Mary Goodenough, Bonnie Sue Jones, Marilyn LaMura, Elaine Matthews, Karen Murray, Maria Nicotia, Audrey Skimmore, Linda Smith and Carol Veghte.

The window of L. S. Drug Store, Franklin St., displays the Arts and Crafts of Brownie Troop 44 and Intermediate Troop 18. Small scale models showing a Scout camp by the river and a Scout cabin are on display by two of our new troops.

# Wilson College Club To Meet Thursday In New York

The Wilson College Club of New York City will meet next Thursday, for dessert and coffee at 7:30 p.m., at 12 West 12th Street.

# Brahm's "Requiem" To Be Given By "Music To Enjoy"

The New York Symphonic Choir, under the direction of William Akers, will present portions of Brahms' "Requiem Mass" at the annual sacred music concert sponsored by "Music To Enjoy" Sunday at the high school at 8 p.m.

Also featured on the program will be Miss Jeanne Forrest, soprano and Peter Corragio, pianist.

Miss Forrest has appeared in concert with the Nutley Symphony Orchestra and at the Newark Public Library. She will sing solo excerpts from Mozart's "Requiem Mass" as well as with the Symphonic Choir.

Corragio, chosen by audition as the only student artist to appear on the program, will present a group of concert favorites by Chopin, Debussy and Mozart.

Sunday's presentation will mark the 17th concert under the guidance of Akers and Miss Hazel Ellsworth, directors of "Music To Enjoy."



Miss Jeanne Forrest

# PARENT-TEACHER CONFERENCE SET

The third annual spring parent-teacher conference will be held Monday evening in all grammar schools and the high school. The program is provided by the Board of Education for the purpose of bringing home and school closer together for the welfare of the child.

The program here is unique in that it includes the high school. Conferences are scheduled, private and last about 20 minutes.

# Hadassah Meets Thurs. At Temple B'nai Israel

The Belleville-Nutley Chapter of Hadassah will meet Thursday at 8:30 p.m. at Temple B'nai Israel, Nutley.

The speaker will be Harold L. Trattner, executive director of the Jewish National Fund of New Jersey and Connecticut. His topic will be the Jewish National Fund and the political situation in Israel.

Following his talk there will be a question period and refreshments. The fund, Mrs. Alexander Ross, president, will preside.

## YOU KNOW WHAT IT COSTS

... when you borrow to buy your car on the Peoples National Bank and Trust Company Auto Finance Plan. You can tell in advance just what the cost will be -- no extras.

We take care of all details of financing for you. For your insurance use your own broker who will give you good service should a claim arise.

In financing your car here, you do more than save money; you establish a valuable credit record with a friendly bank.

### PEOPLES NATIONAL BANK AND TRUST COMPANY

237 WASHINGTON AVENUE  
BELLEVILLE, NEW JERSEY

Parking for Customers  
Admission Free

## MOTION PICTURE

### MARTIN LUTHER

Wednesday, March 21st . . . . . 8 P. M.

Fewsmith Memorial Presbyterian Church

Free will offering . . . . . Everyone Welcome

### ANGELA BEAUTY SALON

FEATURING SPRING SPECIALS IN

### COLD WAVE PERMANENTS

447 Washington Avenue . . . . . Belleville

PLYMOUTH 9-1051

### KATHARINE GIBBS

SECRETARIAL

Training for business success. Write, call, or phone for catalog.

MOntclair 2-2010  
33 Plymouth St.  
MONTCLAIR

### LITTLE SHOP

544 Washington Ave.  
Belleville, N. J.

Greeting Cards  
For all occasions

A Fine Selection of Religious Articles and New Spring Jewelry

### phone rates are LOW

Boston . . . . . 60c  
Detroit . . . . . 90c

From 8:00am after 6 PM and all day Sunday. 3 min. station rates. 10% Fed. tax not included.



# SPOTLIGHT on SPORTS

By Bob Gordin

### "Rees" Admitted Into Essex County League

At long last Belleville will be represented in a strong semi-pro baseball league. Last Sunday the "Rees," sponsored by the Department of Recreation, was admitted into the Essex County Baseball League. The big decision that made Belleville baseball fans have been waiting for came last Sunday at a meeting of league officials and managers at the Montclair Y.M.C.A. Representing the "Rees" at the meeting were manager Bill Murphy and Harold "Bud" Brand, of the Recreation Department.

Belleville took over the spot which was held by Millburn, trying for the lone opening along with the "Rees" was the Newark Aces. Belleville will play a 35-game schedule in the league starting with the first Sunday in May and continuing through the summer months until Labor Day. For the first season, however, the "Rees" will be listed as a travelling team with most of the games slated to be contested on foreign diamonds. In all likelihood though there will be several weekend frays scheduled for Municipal Stadium once the season gets rolling.

With Belleville in the Essex County League, recognized as the strongest semi-pro loop in the entire state, it won't be long before several strong rivalries begin to pop up. A natural set-up figures to be against next-door Nutley. What would be better than to have the "Rees" play host to the Colonels at Municipal Stadium on the Fourth of July as part of the all-day holiday celebration.

### Crew To Open Season Against Columbia U.

Crew Coach Bill Bennett will get his first look at his Belleville High School rowing candidates this afternoon after school when he presides at an open meeting for all prospects in the High School auditorium. All 1956 crew aspirants, whether they are newcomers or returning veterans, will attend the meeting.

The session will get all the boys together for the first time with about 75 prospects expected to turn out. At the afternoon meeting Bennett will explain plans for the eight-month campaign. Actual workouts will commence next Wednesday. The entire Blue and Gold squad will hold daily drills along with Nutley High School on the Passaic River. Both schoolboy rowing organizations will use the Nereid Boat Club as its home base of operations.

Along with the announcement concerning the start of pre-season practice, Coach Bennett also released Belleville's 1956 crew schedule. The Bellboys will have only three weeks to get in top condition because April 7 finds Belleville playing host to Columbia University's lightweight varsity on the Passaic.

Sharing the early season spotlight with the Lions will be a meet against the M.I.T. freshmen. The Bennetmen will travel to Cambridge, Mass., and race the Engineers two weeks later. The Nutley variety will also make the overnight trip with the two squads being the guests of M.I.T. Sandwiched in between the pair of races against college competition will be a Saturday afternoon regatta against Lower Merion High School, of Ardmore, Pa.

One new school appears on the Belleville schedule. This year the Bellboys will row West Catholic High, of Philadelphia, in a home race on April 28. The Philadelphia school takes the place of another squad from the same city, La-Salle High.

In addition to the early season college races, to help get into form, Belleville will compete against most of the top high and prep school crews in the east. The latter half of the schedule will find the Bellboys travelling on three successive weekends. The Blue and Gold will motor to Kent, Conn., to encounter the Kent School and then will travel to Poughkeepsie to battle out with three New York schools on the Hudson. Providing the opposition will be Poughkeepsie, Arlington and Roosevelt high schools.

The races at Poughkeepsie will prep the Bennetmen for the National Schoolboy Rowing Championships which will also be contested on the Hudson on the following weekend, May 25 and 26. Last year the Nationals were conducted on the Schuylkill River, in Philadelphia, and in 1954 were staged at Worcester, Mass.

The crew staff will come to a close on June 2 when Belleville's freshmen match Stokes with Nutley's yearlings in the annual meeting of the ninth grade rivalry.

The 1956 Belleville High crew schedule follows:

- April 7—Columbia Univ. Lightweights, Home
- April 14—Lower Merion High School, Home
- April 21—M.I.T. Freshmen, Cambridge
- April 28—West Catholic, of Phila., Home
- May 12—Kent School, Kent
- May 19—Poughkeepsie, Arlington and Roosevelt high schools, Poughkeepsie
- May 25-26—Nat. Schoolboy Champ., Poughkeepsie
- June 2—Belleville-Nutley Frosh, Home

### Softball Leagues To Meet

Harold "Bud" Brand has announced dates for organizational meetings of the Recreation Department Town-Wide Senior Softball League and the Industrial Softball League for the nearing Spring season.

Next Wednesday will mark the initial meeting of the Industrial Softball League. The time is 8 p.m. at the "Ree" House on Joramelon Street. "Bud" informs me the same place rule that went into effect last year will apply again in this year's circuit. In other words, players must be full time employees of the company they represent. Brand states this puts the bonus on recreation, which is the primary purpose of the league. All industrial concerns in Belleville are invited to send a representative to the meeting.

The Town-Wide Senior Loop will meet at 8 p.m. Monday April 2 at the "Ree" House. Brand invites all of last year's club representatives to be present and extends an invitation to any new club that might wish to enter. All teams must be prepared to field a team composed entirely of Belleville residents. Further information on either of these leagues may be obtained by calling Brand at PL 9-3142 during the day.

Last year Wilbur B. Driver were king-pin in the industrial loop while the Riverside Garage combine, sponsored by Rocco "Rocky" DiGregoria were champs in the Town-Wide League. Rocky's team went on to beat Wilbur B. Driver for the Elmer S. Hyde trophy, symbolic of the town championship.

# Track, Crew, And Baseball Underway At Belleville High

## Spring Sports Program In Full Swing When Weather Permits: Heavy Rains Hamper Baseball

By Dave Thaler

March 21 hasn't made its 1956 appearance yet, but Belleville put its spring sports campaign into action this week.

Track was the first to get the ball rolling, closely followed by baseball and crew.

The cinder sport is not the most popular at Belleville High, and a program aimed at getting interest has been initiated. Austin MacArthur, who for the past few years has managed the J. V. baseball team, became the new track coach. MacArthur, previous experience in track was as cross country coach at Belleville.

It was in cross country that he developed one of his best trackmen to come out of Belleville, Charles Benfield. Benfield placed fifth in the state in the scholastic cross country run, and upon entering the Marines placed third in the all-service mile.

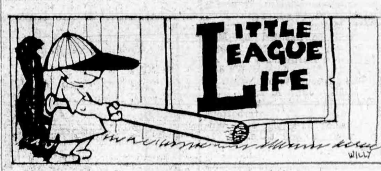
Rebuilding Job

The situation in track this year calls for a rebuilding job. There are about seven returning veterans, and the outlook for the sprinters and weight men is hopeful. MacArthur has high hopes for Scerifello and Billy Bartel, a sophomore, in the shotput events, and has an experienced sprinter in Tommy Candura. The most promising freshman is undoubtedly Robert Cook, a sophomore, who is a sprinter, and teamed up with Candura ought to bring home a few points.

Replacing MacArthur as junior varsity coach is Leonard Marciano. Marciano is not lacking in experience by any means. Besides playing and captaining his high school and college (University of Scranton) basketball, he is a professional ball player in the Northeastern Pennsylvania League.

His coaching experience came in semi-pro ball, where he managed for six years. Marciano, however, is a sprinter, and the fact that baseball is a science. Games are won by the team that takes advantage of the breaks, in a nutshell, Marciano's first talk to the squad.

Baseball is hard to get started.



by Larry Remes, James Eiting, and Bill Ellis

The column, for the next few weeks, will attempt to introduce the individuals responsible for the administration and operation of the Little League. Leo Jackson, President of the National League was born in Newark, in February 1905, attended Our Lady of Good Counsel Grammar School, and graduated from Newark Boy's Vocational School where he was a member of the basketball team. Jackson managed several light semi-pro ball clubs and is a charter member of the New Jersey Umpire's Association. He is a member of the Essex County League, Manufacturers League and was a highly respected umpire in many local high schools and colleges. He is a retired member of the "35" Year Club of the New Jersey Board of Approved Basketball Officials. Jackson is presently employed by the Wilson Tool and Machine Corporation and is an active member of St. Peter's Knights of Columbus and Holy Name Society. He entered the Little League as its Commissioner in 1953. This office was abolished in 1954 and Jackson was elected National League President, an office he has held since that time.

Warren A. Knight

Warren A. Knight, American League President, was born March 1917 in the Forest-Hill section of Newark. He attended Ridge Street School, Barringer High for his freshman year, Belleville High as a sophomore, and finished his junior and senior years at Nutley. His athletic career in high school consisted of baseball, basketball and football. He received "All-State" mention in baseball in his freshman and sophomore year, was elected to the "All-State" basketball team in his junior and senior years, and to the "All-State" basketball team in his senior year.

After leaving school Knight entered semi-pro baseball with Glen Ridge, Vernon and Nutley. Six years ago during his term as editor of the Belleville Times-News and Sports Editor of the Nutley Sun, the idea of a Little League in Belleville came to Knight. He started the ball rolling and with the cooperation of many individuals and organizations it has prospered.

At present he is with the Public Service Electric & Gas Company in the Public Relations Department. Knight has served as President of the American League since its inception.

**YOUR NEW CAR!**

The day is coming when you can pick out a shiny new automobile and say to the dealer, "I'll buy that car." A suggestion: If you plan to finance the car, it will pay you first to ask me about financing and insurance.

(Financing arranged with cooperating Local Banks)

**Michael V. Albertaine**  
Insurance Consultant  
631 Joramelon Street PL 9-5892 Belleville  
Member Essex County Insurance Agents Ass'n

FOR APPOINTMENT PHONE TRUENY 2-485  
A. M. 9:00 A. M. TO 5:00 P. M. MONDAY, WEDNESDAY, FRIDAY  
EVENINGS: 7:00 TO 9:00 MONDAY AND FRIDAY

**Harold J. Wolff, O. D.**  
EYE EXAMINATIONS  
"FREE PARKING IN REAR"  
375 FRANKLIN AVE.  
NUTLEY, N. J.  
Opposite Post Office

# LITTLE LEAGUE TRYOUTS BEGIN HERE APRIL 7

Rec Department Preparing Official Application Blanks Required From All Boys

Applications for would-be Little Leaguers are being prepared by the Recreation Department and will be distributed, through the school system, to all boys interested in trying out for the League.

The complete applications are to be held by the boys and presented to those men who will judge them on the day of tryouts. This is very important for no boy will be able to tryout without a completed application.

Tryouts will be held on April 7, at 9:30 a.m., at River Bank Park, for students from schools 1 and 9, and those students from St. Mary's and Holy Family, living east of Washington Avenue. Also on April 7, tryouts will be held at 1 p.m. at Clearman Field for students from schools 3, 8, and St. Peter's.

On April 14, tryouts will be held at Clearman Field at 9:30 a.m. for students from schools 2 and 4. On that same day tryouts will be held at the Belleville Municipal Stadium for students from schools 5, 7 and 10, and those students from St. Mary's and Holy Family living west of Washington Avenue.

The boys will be expected to have their own equipment, and all equipment will be supplied by the Little League. Last year more than 1,000 boys tried out and the competition is expected to be just as keen this season.

# REC DEPARTMENT BIKE RACE ACTION

John Richter, John Littig, George Less Win Saturday

The Recreation Department's 1956 Bicycle Roller Races are off to a flying start with last Saturday's races producing excellent times, according to Recreation Superintendent Robert Cook.

After the first half, the Aguettes were sadly outplayed as the Workettes gained confidence and continued with Schreiber's scoring. Carol Miller was high scorer for the Aguettes with four goals. Marie Peltier and Jean McNish were close behind with three and two, respectively. Schreiber had 20 for the Workettes and Newswander had two.

# Federal Telephone Gives Five Year Service Pin

Federal Telephone and Radio Company, Clifton, a division of International Telephone and Telegraph Corporation, today presented a five-year service pin and certificate to Isabelle Perelli, 328 Joramelon Street. She is the contract and order service clerk for the company.

**phone rates are LOW**

Boston ..... 600  
Detroit ..... 900

From Boston after 4 PM and all day Sunday, 3 min. station rate, 10¢ Fed. tax included.

# Weekend Weather

April showers are getting an early start. The weatherman looks for rain to fall Saturday with the thermometer falling several degrees.

**Belleville Window Cleaning Co.**

Homes, Stores, Offices, Hospitals, Factories, Etc.

We Do Complete Janitorial Service

STORM WINDOWS & SCREENS SERVICED

PLymouth 1-0480

**CLOTH FOR CANCER**

Sponsored By

**Belleville Kiwanis Club**

Cloth to be used to make bandages for Cancer Society

— Deposit Points For Your White Cloth —

Fire Headquarters—432 Washington Avenue  
William Street Firehouse—117 William Street  
Silver Lake Firehouse—134 Franklin Street

# Recreation Girls Basketball League In Final Play-Offs

Semi-Final Action Sees Cascades Trim Res Aimes By 13-8 Count And Workettes Dump Aquettes In 22-0 Game; Rose Schreiber Scores 20 Points

By Evelyn Hannon

Last Thursday the Recreation Department Girls Basketball League moved into the semi-finals. Four teams were tied in standings as the semi-finals began with the Cascades trimming the Res Aimes, and the Workettes locking horns with the Aquettes.

The Cascades overcame an 8-4 half-time lead to down the Res Aimes 13-8. Inadequacy on the free throw line spelled the doom of the Res Aimes as they went to the line for eleven and missed eleven.

The Res Aimes got off to a quick start, Barbara Polert and Carol Proctor, each scored six points. Paula D'Avanzo made the only score, a two pointer, in the first period for the Cascades.

In the second period Joan Postlewait hit for the Cascades and Terry Winde resulted for the Res Aimes keeping the four point lead for her team.

That was the end for the Res Aimes for the second half they could have won the game several times, even in the final minutes they had control of the ball for the majority of the time. While the Res Aimes failed to score in the second half, the Cascades lowered the boom. Postlewait, team stand-out in the game, hit for four points and Burke added two.

# Good Defense

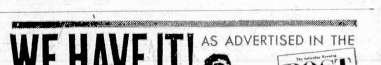
Very tight defensive play for both teams kept scoring low. Kay D'Avanzo, Gruehlich, and Dolores Proctor, Cascade guards, stopped Res Aimes forwards, while Marlene Gruehlich, Grace Fasin, Anna Hiltnerbach and Florence Taylor offered a serious impediment to the Cascade offense.

Postlewait was high gal for the Cascades as she paced her team with nine points. For the Res Aimes, Frederica and Robert had two and Vitale had two.

Rose Schreiber led her team to victory as she lapped in 20 points for the Workettes, dumping the Aquettes. The Aquettes led at the end of the first quarter 3-1. In the second period Schreiber hit four goals for the Workettes, while McNish answered with one for the Aquettes, leaving a 9-5 half time score. By the end of the third period the Aquettes had a 12-7 deficit to make up. In the fourth quarter Schreiber got hot again and sunk nine points to Carol Miller's two points for the Aquettes.

After the first half, the Aguettes were sadly outplayed as the Workettes gained confidence and continued with Schreiber's scoring. Carol Miller was high scorer for the Aguettes with four goals. Marie Peltier and Jean McNish were close behind with three and two, respectively. Schreiber had 20 for the Workettes and Newswander had two.

# Teaches Dancing New Way at Arthur Murray's



"Anyone who can walk can learn to dance the New Arthur Murray Way," says Joyce Lyons. "Why, even beginning to dance after one hour! Try a lesson today and surprise your friends!"

Newark, 106 Halsey St., East Orange, 44 Brick Church Place.

**WE HAVE IT!** AS ADVERTISED IN THE POST

for that Dream Ride!

**NOW, A NEW SERVICE that puts NEW-CAR COMFORT back into YOUR CAR!**

**Comfort Ride**  
CAR CONDITIONING SERVICE

We help you hang on to that new-car dream ride! With our new "Bear" Super Comfort-Ride Car Conditioning Service, we check ALL TEN VITAL CAR 5281 POINTS of your car as shown below! The condition of each can mean the difference between dream-ride comfort and rough, tiring rides. Remember, too, that a comfortable car is a safer car. Drive in comfort and let us make your driving more fun, more economical, safer, less tiring!

**We Check ALL 10 COMFORT POINTS OF YOUR CAR**

- ✓ Check Wheel Alignment
- ✓ Check Shock Absorbers
- ✓ Inspect Wheel Balance
- ✓ Check Tires for Out-of-Round
- ✓ Check Tires for Treadness
- ✓ Inspect Chassis Lubrication
- ✓ Inspect Motor Mounts
- ✓ Inspect Brakes
- ✓ Inspect Leaf Springs
- ✓ Inspect Oil Springs

**ARROWHEAD PONTIAC, INC.**  
645 Washington Ave. Belleville, N. J.  
Phone PL. 1-0400







# PORK LOINS

19¢ 29¢ 29¢ 39¢

Center Cut Roast or Chops . . . 55¢ Whole Pork Loins . . . 35¢  
Delicious with Roast Pork . . . Applesauce 2 1/2 lb. 25¢ Sauerkraut 1 1/2 lb. 25¢

## LEGS OF LAMB

Top Round Roast or Steak Boneless lb. 73¢  
Chuck Steaks Bone in lb. 35¢  
Boneless Chuck Pot Roast lb. 49¢  
Ground Beef Freshly ground lb. 35¢  
Shoulder of Lamb Combination lb. 29¢  
Lamb Chops Rib lb. 79¢ Loin lb. 89¢  
Sliced Bacon Super-Right 1/2 lb. 21¢ 1 lb. 39¢  
Beef Liver Specially selected lb. 23¢  
Boneless Veal Roast Shoulder lb. 49¢

### St. Patrick's Day Dinner Suggestion

**BONELESS BRISKET CORNED BEEF** Front Cut lb. 49¢ Straight Cut lb. 59¢  
Specially cured in our U. S. Government Inspected Corned Beef Rooms for mild, delicious flavor.  
**New Green Cabbage** Southern lb. 5¢ **Maine Potatoes** U.S. No. 1 grade "A" size 10 lb. bag 39¢

### For Freshness and Thrift...A&P-PRICED Fruits and Vegetables!

**String Beans** Florida Farms lb. 17¢  
**Fresh Broccoli** Western bunch 25¢  
**Iceberg Lettuce** Western farms head 19¢  
**Fresh Carrots** Western 1 lb. 10¢  
**Pascal Celery** medium stalk 19¢ extra lge. stalk 25¢  
**Washed Kale** Regalo brand 10 oz. 19¢  
**Spinach** Regalo Brand 10 oz. 19¢ 20 oz. 33¢  
**Salad Mix** Regalo brand 8 oz. 15¢  
**Florida Oranges** New Crop Valencia 5 lb. bag 39¢  
**Delicious Apples** Red - Western 2 lbs. 29¢  
**Fresh Pineapple** Extra large size each 29¢  
**Yellow Bananas** Golden ripe lb. 15¢  
**Navel Oranges** California, Seedless Large size 10 for 49¢  
**Radishes** Florida 6 oz. cello bag 6¢

### Save More...Save More JANE PARKER BAKED GOODS!

## Peach Pie

**Layer Cake** For St. Patrick's Day 79¢  
**Cup Cakes** For St. Patrick's Day pkg. of 6 39¢  
**Hot Cross Buns** Collectively Spiced pkg. of 10 33¢  
**Crumb Square Coffee Cake** 33¢  
**White Bread** 1 lb. loaf 15¢ 24 oz. loaf 22¢  
**Donuts** Plain, Sugar or Cinnamon pkg. of 12 for 25¢

**OPEN LATE THURSDAY & FRIDAY**  
**Super Markets**  
THE GREAT ATLANTIC & PACIFIC TEA COMPANY  
Prices effective through Saturday, March 17th, in Super Markets and Self-Service stores only.

## 465 Famous Brand Grocery Items Reduced Since January 16th Here Are A Few!

**Golden Corn** Green Giant Cream style 2 17 oz. 31¢  
**Del Monte Spinach** 2 15 oz. 29¢  
**Hunt's Tomato Sauce** 6 8 oz. 47¢  
**Tomatoes** Sultana brand Select quality 2 16 oz. 31¢  
**Diced Carrots** Iona brand Fine quality 2 16 oz. 23¢  
**Golden Corn** Iona brand Cream style 2 16 oz. 23¢  
**Cut String Beans** Iona brand Fine quality 15 17 oz. 10¢  
**Libby's Peas & Carrots** 2 17 oz. 37¢  
**Libby's Sliced Beets** 2 8 1/2 oz. 17¢  
**Beans** Ann Page Tomato Sauce or Boston Style 2 31 oz. 35¢  
**Cling Peaches** Iona brand Sliced or halves 29 oz. 27¢  
**Fruit Cocktail** A&P brand Our finest quality 2 17 oz. 45¢  
**Fruit Cocktail** Del Monte 2 17 oz. 47¢  
**Cranberry Sauce** Ocean Spray 2 16 oz. 35¢  
**Orange Juice** Libby's for babies 3 4 oz. 23¢  
**Coronet Prune Juice** 32 oz. bottle 25¢  
**Wheatena** A hot breakfast cereal 22 oz. pkg. 30¢  
**H. O. Oatmeal** Regular or Quick 16 oz. 17¢  
**Shredded Wheat** Nabisco 12 oz. 17¢  
**Minute Rice** Pre-cooked 15 oz. 37¢  
**Uncle Ben's Rice** Converted long grain 28 oz. 43¢  
**River Brand White Rice** 32 oz. 27¢  
**Flakorn** Corn muffin mix 2 12 oz. 33¢  
**Golden Blossom Honey** 16 oz. jar 35¢  
**Cheerios** Oat cereal - ready-to-eat 10 1/2 oz. 22¢  
**Ralston Ry-Krisp** 9 oz. 21¢  
**Waverly Wafers** Nabisco 8 oz. 25¢  
**Chocolate Mallomars** Nabisco twin pack 33¢  
**Royal Gelatin Desserts** 3 9 oz. 20¢  
**Crispo Cookies** Chocolate chip 9 oz. 25¢  
**Tenderleaf Tea Bags** 16 oz. 59¢  
**Hershey's Cocoa** 8 oz. 33¢  
**Pillsbury Frosting Mix** 13 oz. 31¢  
**Fleischman Dry Yeast** 3 11¢  
**Kraft's Velveeta** Cheese spread 2 lb. 85¢  
**Black Pepper** Ann Page Ground or Whole 2 oz. 13¢  
**Mazola Oil** For salads and baking gallon 1.95  
**Heinz Beans** Vegetarian or Pork in Tomato Sauce 2 16 oz. 31¢  
**Hudson Paper Napkins** White 2 80 23¢  
**Angel Soft Tissues** White Facial 2 400 39¢  
**Blue Cheer** New washday suds large 29¢ giant 69¢  
**Lux Toilet Soap** 2 23¢  
**Linit Liquid Starch** 2 quart 37¢  
**Sail Detergent** All Purpose 5 lb. 53¢

## FROZEN FOODS

**Orange Juice** A&P Brand 2 1/2 gal. 29¢  
**Libby's Orange Juice** 2 6 oz. 33¢  
**Minute Maid Orange Juice** 2 8 oz. 30¢  
**Libby's Broccoli** Chopped 2 10 oz. 35¢  
**Potato Patties** Birds Eye 2 12 oz. 27¢  
**Onion Rings** Red L brand 4 oz. pkg. 23¢  
**Morton's Chicken Pot Pies** 2 8 oz. 47¢  
**Swanson's Fryers** Ready-to-fry lb. 63¢

**Sliced Natural Swiss** 1/2 lb. 59¢  
**Sliced Muenster** Sliced or Piced Domestic Cheese 1/2 lb. 49¢  
**Romano Cheese** Imported Italian lb. 99¢  
**Cream Cheese** Breakstone's 2 4 oz. 35¢  
**Mozzarella Cheese** For pizza pies 8 oz. pkg. 43¢  
**Cottage Cheese** Borden's - Regular or California 16 oz. cup 29¢

### Lenten Suggestions!

**Tuna Fish** Breast-O-Chicken 7 oz. 37¢  
**Star Kist Tuna Fish** Light meat - solid pack can 6 1/2 oz. 35¢  
**Pillsbury Pancake Flour** Chunky 16 oz. 17¢  
**Ann Page Syrup** Cane and Maple 12 oz. 25¢  
**Scallops** Frozen 7 oz. 53¢  
**Flounder Fillet** Red L brand - French fried 16 oz. 49¢  
**Rock Lobster Tails** Cap'n John's, Frozen 10 1/2 oz. 69¢  
**Fish Sticks** Conga brand 10 1/2 oz. 29¢  
**Gorton's Cod Fish Cakes** Cap'n John's - Frozen full 10 oz. 21¢  
**Don't Miss These!**

**Keebler Crackers** Town House 8 oz. 23¢  
**Broadcast Chili Con Carne** 2 16 oz. 49¢  
**Burby's Choconut Cookies** 10 oz. 39¢  
**Cocoa Marsh** Chocolate syrup 16 oz. 30¢  
**Strongheart Dog Food** 3 15 1/2 oz. 20¢  
**Tidy Home Household Bags** 2 21¢  
**Woodbury Soap** With 2 cents off wrapper 2 21¢  
**Woodbury Soap** With 1 cent off wrapper 3 23¢  
**Kirkman's Cleanser** 14 oz. 10¢  
**Boraxo** Powdered hand soap 8 oz. 17¢  
**20 Mule Team Borax** 16 oz. 19¢ 32 oz. 35¢

<b>Armour's Treet</b> Lunchmeat meat 12 oz. 35¢	<b>Kraft's Mayonnaise</b> 8 oz. 23¢ 16 oz. 30¢	<b>Pabulum Baby Cereal</b> Oatmeal, barley, Rice or Mixed Cereal 8 oz. 19¢	<b>Kraft's Caramels</b> 8 oz. 21¢ 16 oz. 39¢	<b>Karo Syrup</b> Blue label 24 oz. 23¢	<b>Spry</b> Pure vegetable shortening 1 lb. 32¢ 3 lb. 87¢	<b>Mazola Oil</b> For cooking and salads pint 33¢ quart 59¢	<b>Dash Dog Food</b> Fortified with liver With 8 cents off label 2 16 oz. 23¢
<b>Lux Toilet Soap</b> For toilet or bath 3 reg. 20¢	<b>Lux Flakes</b> For the tub large 30¢ giant 70¢	<b>Dial Deodorant Soap</b> For the bath 2 reg. 25¢	<b>Dial Deodorant Soap</b> For toilet or bath 2 reg. 25¢	<b>Surf</b> For the family wash and dishes large 30¢ giant 72¢	<b>Rinso Blue</b> For the family wash large 30¢ giant 72¢	<b>Spic &amp; Span</b> For washing painted surfaces pint 25¢ giant 77¢	<b>Silver Duet</b> Blue detergent large 31¢ giant 75¢



**THE BELLEVILLE TIMES-NEWS**  
ADVERTISING, NEWS AND BUSINESS OFFICE  
328 WASHINGTON AVENUE  
Published every Thursday by The Belleville  
News Corporation, Belleville, N. J.  
Telephone Plymouth 9-3200  
**RALPH E. HEINZEN, EDITOR AND PUBLISHER**  
Arnold M. Bloom, News Editor  
Mrs. Regina Smaridge, Social Editor

### Living The Suburb

We planned on a place — "in the country,"  
Where nobody's windows were next to ours.  
We didn't want neighbors, we wanted trees.  
October acorns, and April flowers.  
We found them — till somebody's trucks  
came hauling  
And broke every Jack-in-the-pulpit's stem.  
We'd so much rather have rabbits come  
calling,  
And the cardinal's whistle at seven a. m.  
They topped our vista of trees, for the sake  
Of some people, and houses, and household  
goods . . .  
But the cardinal whistles us all awake:  
Good neighbors are worth their weight in  
woods.

Betty Bridgman

### Tax-The Nags First

Nothing costs so much as something you  
get for nothing. And that goes for more  
State school aid.

The Times-News is opposed to increasing  
the state tax on cigarettes from 2 to 5 cents,  
when there is no tax increase on cigars or  
pipe tobacco. We are opposed to attaching  
a sales tax to our gas bills or those for oil,  
coal, water, electricity or any other utility.  
Those are not luxury taxes, because our  
household utilities are necessities, not luxuries.

If there ever comes a time or a need for  
increased state tax income, let our legisla-  
ture turn first to the pari-mutuels. Let the  
State fatten the kitty by increasing its  
share of the winning bets on the running  
nags. Betting on the races is no household  
necessity. If ever there was a luxury, that's  
one, and a costly one, too. So before the  
State adds to existing taxes on cigarettes  
or gasoline, or creates new sales taxes, let  
the legislators collect their taxes at the race  
track or increase the state stamp tax on  
liquors.

R. E. H.

### What About Nixon?

It is a matter of history that of the 36  
Vice-Presidents in American history, ten of  
them have moved up to the Presidency.  
Seven of them succeeded to the highest  
office unexpectedly and four of those "political  
accidents" were thrown out by the people  
at the first chance.

It is timely, therefore, in view of President  
Eisenhower's recent ordeal, to examine the  
qualifications of the man who might suc-  
cidentally be called to the White House. The  
President made it clear at his press conference  
this week that he would resign in-  
stantly if his health failed again to the  
point where he did not feel he could ade-

quately perform the duties of President.

We have the sorry lesson of a Truman  
who rose to the Presidency by the death of  
President Roosevelt. But for an eleventh  
hour shift at the Democratic Convention  
which named the Missourian as Vice Presi-  
dent, we would have had Henry Wallace, his  
predecessor as Vice President, in the White  
House. The lesser of the two evils was bad  
enough to warrant serious study of our  
"heirs apparent."

The framers of our Constitution provided  
that the man receiving the second largest  
vote in the Electoral College should be Vice  
President. After the development of political  
parties and a tie vote which nearly turned  
the Presidency over to Aaron Burr, this  
provision was considered unworkable and  
amended. Since 1804 Vice Presidents have  
been named specifically for that place. But  
the results have been less than ideal.

Habitually national party conventions  
have been altogether too casual about this  
important office. The process of nominating  
Vice Presidents has been dogged by two  
dangerous factors. It comes as an anti-  
climax after the big battle for first place  
has been decided—often with the convention  
dissolving. This makes for haste and care-  
lessness.

A second trouble is that there is usually  
an effort to paper over the cracks left by  
factional battles. United support for the  
ticket is sought by tossing the Vice Presi-  
dency to the defeated faction. This risks a  
sharp reversal of leadership—sometimes  
almost as sharp as if the rival party had  
gained the White House. One need only  
mention the names of John Tyler, Andrew  
Johnson, and Theodore Roosevelt to illus-  
trate.

Even if there were not the possibility of  
succession, the office has become so im-  
portant in late years to be so casually  
handed out. It is high time that solid qualifi-  
cations for the highest office rate ahead of  
delegates' haste to catch the next train  
home or the possibility of soothing ruffled  
feelings and drawing a few votes from a  
certain state.

As for the specific case of Vice President  
Nixon, the opposition is wholly political,  
wholly Democratic. To Adlai Stevenson,  
Nixon is a "Republican hatchetman." Shades  
of Harry Truman, the Democratic blunder-  
buss!

President Eisenhower is, without a  
doubt, the most popular man in the land.  
One reason that he has retained all of his  
popularity is that Nixon accepted the ardu-  
ous task of defending the Administration on  
the political level to allow President Eisen-  
hower to rise above the partisan battle. The  
fact that the Democrats hate Nixon as they  
do may, perhaps, prove that he has done  
his job as a "hatchetman" too well.

The Democrats have a likely chance of  
retaining control of both Congress and the  
Senate next November. If that happens, it  
will mean a continuation of the split control  
in federal government. That is where Presi-  
dent Eisenhower, a political neophyte, needs  
as his second man someone well versed in  
partisan battles. His Vice President must  
have the political qualities for two. He must  
be a veteran of the battles of Capitol Hill.  
—R. E. H.

## One Man's Opinion

French want to see for themselves if Moscow  
really has changed and Paris cabinet  
meanwhile becomes neutralist.

By Ralph Eric Heinzen

What's wrong with France? Are the French  
deteriorating into a second class power? Is the French  
Empire doomed to disappear? Is France a dependable ally  
of ours, or is she trying to play the role of a hyphen between  
the Soviet Union and the Anglo-Americans?

Obviously, the French themselves do not know the  
answer. Under the stress and strain of too-frequent cabinet  
changes, France is searching for the answers. Under a Social-  
ist Premier, France leans towards Pacifism. Our policy in  
the Middle East worries her. Unless invaded, France wants  
no part of a possible World War III. Under Moscow pressure  
to improve Franco-Soviet relations, the French Government  
has decided to go and see for itself, at the Kremlin itself,  
what the basis of such closer relations could be. The role of  
a hyphen is not abhorrent to the government of Socialist  
Premier Guy Mollet.

France, last weekend gave  
official assurances to Wash-  
ington and London that her  
ties to the west are firm, but  
away from her desk, French  
Foreign Minister Christian  
Pineau has been very critical  
of what he contends are er-  
rors in tactics on our part in  
the "cold war." Pineau, par-  
ticularly, questions the wis-  
dom of our tactics in placing  
emphasis on military threats  
in our relations with the Mid-  
dle East and the Far East.

#### French Turn Neutralist

The core of the French criticism  
is that Western policy has  
not been adjusted to meet the  
shift in Soviet tactics from Com-  
munist military threats to eco-  
nomic and political penetration.  
Pineau and Jules, in Karachi  
this week for the SEATO con-  
ference, aimed at patching our  
common defenses in Southeast Asia,  
were at odds over the value of  
that military alliance.

It is obvious that Pineau, while  
mouthing full loyalty to the North  
Atlantic Treaty Organization, is  
a neutralist as far as the Middle  
and Far East are concerned.  
Looking around him, he can not  
help but observe that neutralism  
is making steady inroads in his  
own country. The French com-  
munist, he knows, too, that neutralism  
has spread like a brush fire  
through the Arab nations and  
now, throughout Southeast Asia,  
there is a growing conviction that  
neutralism would be better than  
another World War.

#### Arabs Choose Neutralism

He knows, too, that neutralism  
has spread like a brush fire  
through the Arab nations and  
now, throughout Southeast Asia,  
there is a growing conviction that  
neutralism would be better than  
another World War.

It is Pineau's contention that

ALBERT H.

PLUMBING

BORMANN

HEATING

COMMERCIAL

INDUSTRIAL

RESIDENTIAL

45 Meitz Avenue Plymouth 9-3247

DRIVE UP . . .

Use our drive-in window  
or free parking lot

WALK UP . . .

A special outside window  
for mothers with carriages!

COME IN . . .

100% air conditioned,  
winter and summer

or SAVE-BY-MAIL

Prompt, convenient service  
at any time

Savings insured to \$10,000;

generous dividends  
paid regularly

**DeWitt Savings**  
AND LOAN ASSOCIATION  
463 WASHINGTON AVENUE  
Cor. Tappan Avenue, Belleville, N. J.  
Plymouth 9-5264

Daily, 9 to 4, also MON. EVES., 6:30 to 8  
Savings Accounts • Mortgage Loans • G. I. Home Loans  
Home Improvement Loans • Travelers' Cheques • Money Orders

flaz of "neutralism" which has  
inspired the visit of premier Mol-  
let and Foreign Minister Pineau  
to Moscow, May 14, to visit the  
leaders of the Soviet Government.  
Vincent Auriol, former Presi-  
dent of France, a Socialist, is now  
on an informal visit to Moscow and  
has given the red carpet treat-  
ment at a lavish state reception.  
Moscow despatches this week said  
Soviet Foreign Minister Vyaches-  
lav M. Molotov conferred at length  
with Auriol and Pineau. The vic-  
e union would like to improve  
relations with France.

Meanwhile, Danish Prime Min-  
ister H. C. Hansen has already ar-  
rived in Moscow for a state visit.  
His hosts are doing their utmost  
to loosen Denmark's Atlantic Pact  
ties to the West.

Danese, Too, Neutral

Mr. Hansen has already let it  
be known that he will not object  
to signing a declaration from the  
capital of world communism re-  
affirming Denmark's determina-  
tion not to permit foreign troops  
to use Danish bases.

Norwegian Prime Minister Einar  
Gerhardsen signed a similar state-  
ment when he visited the Soviet  
Union last fall. Although both  
Scandinavian countries have long  
had such a policy, such declara-  
tions have a tremendous propa-  
ganda value for the Soviets.  
The Kremlin invited Edgar  
Faure to visit Moscow last year  
when he was French Premier,  
along with his Foreign Minister,

Antoine Pinay. M. Faure and M.  
Pinay did not accept the invita-  
tion because France resented the  
Soviet vote in the United Nations  
Assembly favoring discussion of  
French administration of Algeria.  
But the new invitation to M.  
Mollet—and his acceptance—taken  
on new significance because of the  
campaign the French Communist  
Party has been carrying on to  
draw the Premier's Socialist Party  
into a "popular front" governing  
alliance. M. Mollet so far has  
rejected the Communist overtures  
but did not refuse Communist sup-

port when they voted to confirm  
him in office.

The Kremlin leaders at the re-  
cent Soviet Communist Party con-  
gress in Moscow advised Commu-  
nists in non-Communist lands to  
seek alliances with Socialist and  
other parties of the working class  
as a road to governing power. For  
that reason the visits of the French  
Socialists in key government po-  
sitions to Moscow, worries Washington  
no end.

Plymouth 9-0331  
Leaders & Cutters  
**DANIEL A.  
SERRITELLA**  
Plumbing & Heating  
Gas & Oil Heat  
120 Franklin Street  
Belleville, N. J.

**EAST NUTLEY GARAGE**  
C. A. FANELLI, Prop.  
Body and Fender Repairing  
Expert Auto Repairing  
Phone: NUTLEY 2-9645  
45 Washington Avenue, Nutley, N. J.

**'56 MERCURY**

We must not advertise any price lower than  
\$2095. Stop in, you'll see why with our BIG DIS-  
COUNT POLICIES you could say we are a  
**WHOLESALE MERCURY**  
**SALE** Because of our low, low overhead  
We are out of the high rent areas, yet are easy  
to reach  
Because we are owner-operated  
We see all the deals, we know our expenses, we  
figure close  
**SALE** Because we sell our trade-ins fast  
We supply several outlets, so we give bigger al-  
lowances, too  
Because our service department is tops  
Compare our efficient and competent service  
absorption program  
Call now for  
Credit O. K. . . . **PL 1-0500**  
**ALTO MERCURY**  
**LINCOLN**  
25 WASHINGTON AVENUE  
BELLEVILLE Near Newark  
City Line Open to 9 P. M.

**So They Say**

SHE SAW A GEA  
OF FACES

...They all advised her to  
visit The Franklin Casino.  
The whole town's pleased  
with the courteous atten-  
tion.

**So They Say**  
AT THE  
**FRANKLIN CASINO**  
338 Franklin Avenue  
Belleville  
PL 9-2111

## Letters To The Editor

Editor, Belleville Times-News:

One of the great nan of our  
nation, Benjamin Franklin once  
said, "If only things were printed  
they would offend nobody, very  
little could be printed."

This saying is still most fitting  
and to the point in our modern  
time for good advice for many.  
Every twopenner worthy of the  
name should consider it a mission  
and duty, to act as spokesman  
and champion for truth, order,  
and fair play in good government.

For two years the taxpayers  
of Belleville have been played  
for a sucker by aggressive and ir-  
responsible minorities who have  
tried their level best to use the  
town as a football for selfish and  
privileged interests. March 7 is a  
black and sad day for the tax-  
payers of Belleville, one they  
should never forget for future  
consideration. An outrageous 30  
point tax increase was thrown  
into their lap as a fait accompli  
by the fist masters of the town  
they had elected as public em-  
barrassment.

Taking the last 20 years as an  
example, taxes have been doubled,  
but it took 18 years for a 4%  
raise, and only two years for  
our town fathers to raise the other  
6%—congratulations of course  
are not in order.

Two hundred and fifty tax-  
payers voiced their opinions in  
disgust, only to be politely ushered  
out of a five hall with a bundle  
of sympathy under their arm. Per-  
haps 5000 are should go down  
to the town-hall, to set some-  
thing right that is utterly wrong.  
Where is this folly going to  
lead to? People have lived here  
all their lives, raised their child-  
ren, and when old go into re-  
tirement on pension, and try to  
live a few more years in peace  
and contentment, and what hap-  
pens? They are taxed out of

stown by irresponsible spendthrifts.  
It is a sad but true thing; Bel-  
leville taxpayers now find com-  
ing home to roost the ugly birds  
they helped to hatch in years  
gone by, by their indifference and  
complacency and lack of interest  
in voting concerning with the  
affairs of the town.

An outrageous school-budget  
was first voted down by a big  
majority, and later passed as a  
vote of "confidence" by tickery  
and lack of publicity. A six point  
point reduction, it is laughable.  
It should have been trimmed by  
at least \$100,000 and the same  
goes for the municipal budget.

You can't spend money that  
is not available, and above all,  
the town can't afford. There is  
nothing wrong with certain salary  
raises, if they are deserved, and  
the size is governed by the abili-  
ty of the town to pay. Every-  
thing is wrong however, when  
money is thrown across the board  
in an indiscriminate manner, just  
to keep up with the Joneses, and  
play the taxpayers for the sucker  
to foot the bill.

The taxpayer in Belleville is the  
master of the whole show, but  
some have apparently forgotten  
this, and consider him the goose

that lays the Golden Eggs. Some-  
thing drastic must be done to set  
things right, and very soon. Com-  
mission government has clearly  
by complete failure shown, that  
it has outlived its day and should  
have been assigned to the politi-  
cal graveyard long ago. Any  
voters that are not convinced  
yet, and looking for more misery  
in the future, are real givers  
for punishment. To entrust the  
welfare of the town into the  
hands of public servants with  
travagant and unsound ideas is  
folly. Truth is not always wel-  
come, but it leads to better things,  
so badly needed in our troubled  
times, so we might as well make  
our mind up to make it a better  
world to live in.  
Alfred K. Boerner  
12 Center Street

**MARY'S  
LUNCHEONETTE**  
STRICTLY HOME COOKING  
Catering a specialty  
to Homes, Offices or Parties  
**TRY US**

No order too small or too large  
to serve  
**FREE DELIVERY**  
380 Washington Avenue  
Plymouth 9-9768

### DO IT YOURSELF

Clean Your Own Furniture  
At Home With the Same Product  
We Use In Our Plant  
Enough For Three Pieces **\$1.90**

**MEADS - MILLER CO.**

143 Franklin Avenue

NU 2-4305

Space contributed  
to Red Cross by  
Public Service



# Church Bulletin

St. Peter's R.C.

Friday during Lent, 8:30 and 9:45 p.m. followed by Benediction.

St. Anthony's R.C.

Masses in the church at 7:30, 9, 10, 11 and 12 a.m.; in the chapel at 8, 11:15. Sunday school will follow the 9 o'clock children's mass.

Bethany Lutheran

Sunday school, 9:30 to 10:30 a.m.; Church service 11 to 12 p.m. by Rev. T. Painter Hansen. "Who is this Jesus?"

Monday, 8 p.m., Church Council. Lenten Service. Monday, 8 p.m., Ladies Guild.

Christ Episcopal

Tonight, 7:30 p.m., Vestry meeting. Sunday, 7:45 a.m., Holy Communion; 9:30 a.m., Church school; 11 a.m., Morning prayer. Coffee hour will follow after this.

service. Monday, 8 p.m., Altar guild; Tuesday, Cancer dressing, 1 to 4 p.m.

Fevamith Presbyterian

Tonight, 7:30 p.m., Cub Pack 350 meeting at the church. Tomorrow, 8:30 p.m., Couple's Club Square Dance; Sunday, 9:30 a.m., Church school; 11 a.m., Church service, sermon by Dr. James R. Morris. "Why Jesus Was Crucified." Class for new members, 4 p.m.; Junior Westminster Fellowship, Stewardship

club. Tuesday, 8 p.m., Adult bible class. Tuesday, 8 p.m., Fellowship Circle meeting, guest speaker, Mrs. Sybil Bailey, of India. Tuesday, 8 p.m., Board of Trustees meeting. Wednesday, 8 p.m., Lenten service, motion picture, "Martin Luther."

Grace Baptist

Tonight, 8 p.m., Men's bowling club. Tomorrow, 7:30 p.m., young people will attend East Association

Youth Rally in Arlington

Sunday, 9:30 a.m., Cherub choir; 9:45, Church school; 10, pastor's class in church membership; 11 a.m., Morning worship and sermon by Rev. Albert V. Lawson, "Love, the Law of Life." Nursery care is provided for pre-school children.

Tuesday, 8 p.m., Monthly meeting of the church school officers and teachers. Wednesday, 8:30 p.m., Girl Scouts; 8 p.m., Adult choir. Thursday, 8 p.m., Board of Deacons meeting.

Congregation Ahavas Achim

In commemoration of National Girl Scout Week the services tonight beginning at 8:30 will be dedicated to the Girl Scout Movement at the temple.

Rabbi Albert L. Raab will officiate and will be assisted in the conduct of the service by the members of Girl Scout troop 6 who will participate actively in the service, and Brownie Troop 12. The scouts are under the leadership of Mrs. S. Y. P. Fischer and Mrs. Sidney Lane. The

Brownies are led by Mrs. David Klugman.

The scouts will be hostesses for the "Ozong Shabbath" which will follow the services. The theme of the evening will be: "What Give Scouting Means To Me."

Montgomery Presbyterian

Sunday school, 9:45 a.m., adult bible class; Morning worship, 11 o'clock, sermon by Rev. Frederick Palmer, guest preacher. 5:30 p.m., Box supper for church

(Continued On Page 3, 2nd Section)

# WE'RE READY FOR SPRING.

## Fabulous Savings on Fine Hosiery

Fashion-Right for Your Easter Finery

## Rose Fair NYLONS

Guaranteed First Quality

Made of fine, long lasting DuPont Nylon... perfectly knit... beautifully sheer, by world-famous makers of finest hosiery. Only through this unique Food Fair "Customer Service" offer can you obtain such fabulous savings on fine hosiery!

YOUR CHOICE OF 6 STYLES... IN NEWEST SPRING SHADES

51-Gauge 3 pair \$179

15-Denier 3 pair \$179

Regular retail value \$1.15 a pair... Food Fair's low price is less than 60¢ a pair!

60-Gauge 3 pair \$199

15-Denier 3 pair \$199

Regular retail value \$1.35 a pair... Food Fair's low price is less than 87¢ a pair!

51-Gauge 3 pair \$199

30-Denier 3 pair \$199

Regular retail value \$1.35 a pair... Food Fair's low price is less than 87¢ a pair!

Seamless, Run 3 pair \$239

Resist Sizers 3 pair \$239

Regular retail value \$1.50 a pair... Food Fair's low price is less than 80¢ a pair!

SEAMLESS 3 pair \$269

STRETCH 3 pair \$269

Regular retail value \$1.65 a pair... Food Fair's low price is less than 90¢ a pair!

Seamless 3 pair \$269

DISHMOSE 3 pair \$269

Regular retail value \$1.65 a pair... Food Fair's low price is less than 90¢ a pair!

FINEST QUALITY

## 100% NYLON S-T-R-E-T-C-H SOX

IN SPARKLING NEW SPRING PATTERNS and COLORS!

**GIRLS'** TO FIT SIZES 6 to 11 2 PAIR \$99¢

Reg. Value 69¢ A PAIR. SAVE 39¢ ON 2 PAIR!

A new variety of spring colors in fine quality anklets with conventional turn-over cuffs, triple roll cotton cuffs, and daintily embroidered pattern cuffs, in soft pastels, darks and whites to blend with your Easter finery!

**BOYS'** TO FIT SIZES 6 to 11 2 PAIR \$99¢

Reg. Value 69¢ A PAIR—SAVE 39¢ ON 2 PAIR!

The perfect socks for every boy... style plus long wear... and s-t-r-e-t-c-h that grows with growing feet. Choose from a multitude of new spring patterns and colorings.

**for the MEN!** S-T-R-E-T-C-H SOX to fit sizes 10 to 14

2 PAIR \$125

Reg. Value \$1.00 A PAIR—SAVE 75¢ ON 2 PAIR!

## Lipton's Soup Mixes

Tomato	Noodle	Beef Flavor	Green
Vegetable	Soup	Vegetable	Pea
pkgs. of 35¢	pkgs. of 33¢	2 pkgs. 31¢	2 pkgs. 27¢

## KEEHLER Saltines

16 oz. pkg. 25¢

Old Dutch Cleanser

1/2 Price comb. Sale 18¢

**FOOD FAIR'S "EXTRA VALUE" DEL MONTE FLAVOR PARADE**

**OPEN LATE**  
Thursday to 9 p.m.  
Friday to 10 p.m.  
Saturday 8 a.m. to 6 p.m.

JUST ONE OF MANY FAMOUS BRANDS AT FOOD FAIR!

Del Monte Tomato Catsup	14 oz. bot.	19¢
Del Monte Peaches	29 oz. cans	59¢
Del Monte Fruit Cocktail	17 oz. cans	45¢
Del Monte Tomato Sauce	8 oz. cans	45¢
Del Monte Green Peas	17 oz. cans	35¢
Del Monte Stewed Tomatoes	16 oz. cans	39¢

Food Fair Carries A Complete Variety of Passover Needs for The Holidays

ROKEACH

Gefilte Fish	16 oz. jar	49¢
Rokeach Nyafat	19 1/2 oz. jar	63¢
Planter's Hi Hat Oil	qt.	69¢
Diamond Crystal Kosher Salt	3 lb. box	18¢
Mott's Apple Juice	2 qt. bot.	41¢
Goodman's Kichel	3 oz. pkg.	39¢
Chicken Soup	Manischewitz Clear or Matzo Ball	10 1/2 oz. can 23¢
Manischewitz Matzo Meal	16 oz. pkg.	33¢

"Lenten Special"



**Fyne Taste**  
Cooked  
**Spaghetti**  
2 15 1/2 oz. cans 23¢

Del Monte Pineapple Drink	46 oz. can	27¢
Del Monte Sliced Pineapple	20 oz. can	31¢
Del Monte Fruit Cocktail	30 oz. can	39¢
Del Monte Cherries	Light or Dark Sweet	17 oz. jar 33¢
Del Monte Asparagus Tips	Many Washington	8 oz. can 32¢
Del Monte Golden Corn	Whole Kernel	2 12 oz. cans 33¢
Del Monte Diced Carrots		2 16 oz. jars 35¢
Del Monte Whole Green Beans		16 oz. can 29¢
Del Monte Sardines	In Tomato Sauce	15 oz. can 23¢
Del Monte Cut Green Beans		16 oz. can 23¢
Del Monte Red Sockeye Salmon		7 1/2 oz. can 53¢

## Stock Up On Famous Lever Brothers Products

Spry Pure Vegetable Shortening	3 lb. can	87¢
Lux Liquid Detergent	22 oz. can	65¢
Swan Toilet Soap	comb. of 5	23¢
Lifebuoy Soap	FREE CASE SALE	comb. of 5 28¢
Lifebuoy Soap	Bath Size	3 ctns 38¢
Lux Soap	3 reg. cakes 26¢	2 bath cakes 23¢
Lux Soap Flakes	large package	30¢
Rinso White	giant package	72¢
Surf Detergent	WITH FREE DISH TOWEL	giant pkg. 75¢
Breeze		large package 30¢
Rinso White		large package 30¢
Rinso Blue		giant package 72¢
Rinso Blue		large package 30¢
Silver Dust Blue	WITH FREE Face Cloth	lg. pkg. 31¢
Silver Dust Blue	WITH FREE Dish Towel	qt. 75¢
Swan Soap	Regular Size	3 cakes 26¢

## Chun King

How Mein Noodles	No. 22	25¢
Meatless Chow Mein		
With Noodles		
Sale		49¢
Chun King 1/2 Sale		
Beef Chop Suey		55¢
Subgum Chicken		
With Noodles		can 57¢

## Progresso

Top Quality Products		
Lupini Beans	2 8 oz. jars	27¢
Kidney Beans	20 oz. can	15¢
Soup	Minestrone	2 20 oz. cans 45¢

WE RESERVE THE RIGHT TO LIMIT QUANTITIES - NONE SOLD TO DEALERS.

**SAVE GREEN REGISTER TAPES FOR FREE ALUMINUMWARE & DINNERWARE GET DETAILS IN STORE!**



youth; 6:30 youth choir; Wednesday, 8 p.m., Lenten Services, Dubois "Seven Last Words."  
**Silver Lake Baptist**  
 Sunday, Bible school, 10 a.m.; Church worship, 11 a.m.; Preaching service, 6:30 p.m.; S.L.B. Youth Fellowship, 4:30 p.m.  
 Friday, Junior choir rehearsal, 3:30 p.m.; High School choir, 7 p.m.; Senior choir, 8 p.m.  
 Holy Communion, is administered every first Sunday of the month at 6:30 p.m.  
**Wesley Methodist**  
 Sunday, 9:45 a.m., Sunday school and Adult Bible class; 11 a.m., Morning worship. Rev. Clifford A. Hewitt, pastor, will preach. Nursery care for children is provided at this service.  
 6 p.m., Junior High Fellowship; 7:30, Senior High and Young Adult Fellowship at the church.  
**Belleville Reformed**  
 Tonight 8, Congregational Dinner. Selection of Elders and Deacons. Sunday, 9:45 a.m., Communion Breakfast For St. Peter's CYO  
 St. Peter's, C. Y. O. will hold its monthly communion breakfast Sunday in the school cafeteria following the eight o'clock mass. Rev. Francis Ignatius will be the principal speaker.  
 Church school, 10:50. Morning worship, sermon by Dr. John A. Stray, "The Mystery of His Presence."  
**PTA Members to View Film On Retarded Child**  
 "Tuesday's Child," a film dealing with retarded children, will be presented at the School Twoing Tuesday at 8 p.m.  
 James M. Robbins, executive director for the N. J. Association for Retarded Children, will be guest speaker.  
**OUR CLASSIFIED BRINGS QUICK RESULT**  
**Police Ball to Be Held Tomorrow At Elks' Club**  
 Al Lang and his Orchestra will provide music for dancing at the annual Police Benevolent League ball tomorrow night at the Elks Club.  
 The affair will be catered and tickets may be purchased from any police officer.  
 In charge of arrangements are Harry Winfield, chairman, John Dente, Bernard Thaddeus, Jimmy Pinder, Joseph O'Reilly and Hugh O'Toole.  
**'Ireland's Treasures' Concert At Bayley Club**  
 Members of Belleville Unit 105, American Legion Auxiliary, will be hostesses Monday at a ward party at East Orange Veterans' Hospital.  
 Mrs. Edwin Ackerman, rehabilitation chairman, will be in charge. She will be assisted by Mrs. Joseph J. Buerger, Mrs. Arthur Sharrock, Mrs. Walter Weiss and Mrs. William Konrad.  
 The Auxiliary recently approved the American Legion bill HR 7586, known as the War Veterans' Security bill.  
 William Flah, soloist of Our Lady of Grace Church, Hoboken will be guest artist. Miss Frances Fitzsimmons, pianist, will be accompanist.  
 Mrs. James A. Schild will preside at a business meeting preceding the program, at which plans for a card party April 6, will be discussed.  
 Tea will be served in the lounge after the concert.  
 It's a waste of ammunition unless you have a good aim in life.

# ... WITH VALUES THAT SING!

*Serve Your Family A Good Ole' Fashioned Corned Beef and Cabbage Dinner for St. Patrick's Day!...*

New England Cured — Boneless Brisket      Crisp, New, Fresh

**Corned Beef lb. 49¢      Cabbage      Solid Head lb. 5¢**

*How to Prepare Your CORNED BEEF.*

Corned Beef and Cabbage are a happy, happy pair. Wipe meat with a damp cloth. Place in a large deep saucepan and cover with cold water. Bring water to a boil and cook slowly for 5 minutes. Cover and cook gently until tender, (about 3 1/2 hrs. for 4 lbs.) Do not boil. Drain and slice. Excellent served with horseradish or mustard sauce.

PSG Top Quality Meats... Always Your Best Meat Buy!...

PSG TOP QUALITY — Milk Fed

**Veal Roast      Legs or Rumps      lb. 49¢**

PSG TOP QUALITY — Loin

**Veal Chops      lb. 79¢      Turkeys      16-22 lbs.      lb. 49¢**

FARMER GRAY — U. S. Gov't Graded 'A' Eviscerated

**All Beef Salami      Piece or Midget      lb. 55¢**

Dairy Foods For Lent!

**Swiss Cheese      Fancy Domestic By the Piece      lb. 59¢**

BALLARD

**Oven Ready Biscuits      2 tins 25¢**

MAYFAIR

**Cream Cheese      3 oz. 25¢      8 oz. 33¢**

**Prize Winning Eggs**  
from Nearby Farms

FOOD FAIR AWARDED 4 BLUE RIBBONS At the Mid-Atlantic Farm and Home Show — "For Quality & Freshness — "For Uniformity in Size & Weight — "For Cleanliness & Shell.

**Kitchen Fresh      READY TO SERVE      Fresh Vegetable**

**Salad      lb. ctn. 27¢**

**Salmon Croquettes      2 per 39¢**

**FOOD FAIR**

Ocean Fresh Seafoods

**First-of-the Season**

Fresh Caught Jersey

**Shad      Buck      lb. 29¢**

Fresh Caught Jersey

**Roe Shad      Including Roe      lb. 45¢**

Selected Jersey

**Butterfish      lb. 25¢**

Selected

**Halibut Steak      lb. 53¢**

**Fresh!**

From Farm to You at FOOD FAIR

Hundreds of carloads of farm-fresh produce are unloaded at Food Fair's warehouse in the wee hours of the morning... Here they are loaded into refrigerated trucks and sped on their way to your neighborhood Food Fair. Every day you'll find this fine farm-fresh produce on display in refrigerated cases for your selection.

Tender, Stringless

**Green Beans      2 lbs. 29¢**

Golden Yellow Hearts

**Escarole or Chicory      2 lbs. 19¢**

Fresh Ripe

**Pineapples      Juicy N' Sweet      ea. 25¢**

**SMART GARDENERS MAKE FOOD FAIR THEIR FIRST STOP!**

Visit our Garden Department for an excellent selection of Grass Seed and Plant Food. See our large selection of tools and garden equipment all reasonably priced.

**Spring Values in Frozen Foods**

**Haddock Fillets      Taste-O-Sea      lb. 39¢**

Pictsweet

**French Fries      9 oz. 27¢**

**Chun King Cantonese Dinner      12 oz. pkg. 89¢**

**Wesson Oil      pt. 33¢ at 59¢ 1/2 gal. 1.99**

Copper Fry Pan only \$1.00 and one Wesson Label.

**G. Washington      Instant Coffee      2 can 51¢      4 oz. 87¢      10¢ off**

**Kretchmer      Wheat Germ      12 oz. jar 29¢**

**Welch's      Fruit-of-the-Wine      8 oz. jar 25¢      20 oz. jar 45¢**

**All      10 lb. pkg. 2.19**

Dishwasher "All" 20 oz. 45¢

Fluffy "All" 19 oz. 35¢

**Lipton Tea      1/4 lb. 41¢      1/2 lb. 79¢**

**Lipton Tea Bags      pkg. 23¢      48 of 48 59¢**

**Mrs. Paul's      Fresh Frozen Foods**

**Fried Shrimp      6 oz. pkg. 59¢**

**Deviled Crabs      6 oz. pkg. 45¢**

**Frigidinner      Fish Stick Dinner      10 oz. pkg. 59¢**

With Baked Macaroni in Cheese Sauce and Fresh Garden Peas.

554 Washington Avenue  
Belleville, N. J.

GROCERY PRICES EFFECTIVE MARCH 15 thru MARCH 21 ALL OTHERS MARCH 15, 16 and 17 ONLY.

**SAVE GREEN REGISTER TAPES FOR FREE ALUMINUMWARE & DINNERWARE GET DETAILS IN STORE!**



**Alexander McPherson**  
Alexander McPherson, Sr., of 14 Reservoir Place, died March 11 at St. Francis Hospital, Jersey City, of a five-week illness. Mr. McPherson had undergone an abdominal operation.  
Born in Scotland 85 years ago, he came to this country about 1915 and lived in Jersey City 15 years before moving here 25 years ago. He was a retired stone cutter. Mr. McPherson was a member of the McLeod Council of the American Scots of Scotland. His wife, Mrs. Eliza Wilson McPherson, died in 1951.  
Surviving are two daughters, Mrs. Elizabeth Ennis and Mrs. Edith Campbell, both of Jersey City. Mr. McPherson was buried at the McLeod Council of the American Scots of Scotland. His wife, Mrs. Eliza Wilson McPherson, died in 1951.  
Surviving are two daughters, Mrs. Elizabeth Ennis and Mrs. Edith Campbell, both of Jersey City. Mr. McPherson was buried at the McLeod Council of the American Scots of Scotland. His wife, Mrs. Eliza Wilson McPherson, died in 1951.

**Francis McLaughlin**  
Francis J. McLaughlin, of 14 Berkeley Avenue, a general foreman at the Westinghouse Electric plant in Bloomfield, March 12, of a heart attack at the Mid Valley Hospital, Peckville. He was 64.  
Born in Archbald, Mr. McLaughlin joined the Westinghouse Electric Co. in Bloomfield in 1929. He was general foreman of plant maintenance. Prior to moving to Peckville in 1935, Mr. McLaughlin lived for six years in Newark. He leaves his wife, Anne O'Rourke McLaughlin; two sons, Miss Betty McLaughlin of Scranton, Pa., and Mrs. Michael Newcomb of Carbondale, Pa., and a brother, Michael McLaughlin of Toon, Pa.  
Services will be held today from 410 Church Street with a

**W. W. MELVILLE**  
Roofing Contractor  
For Good Roofing Call  
Melville From Belleville  
71 Lighth St. Belleville, N. J.  
PLymouth 9-4278  
HUmboldt 5-1833

phone rates are LOW  
Boston ..... 60c  
Detroit ..... 90c  
From Boston after 6 PM and all day Sunday, 3 min. station make, 10¢ Fed. tax not included.

**William Bergida**  
William Bergida, of 125 Birchwood Drive, died at his home after suffering a heart attack. He was 48.  
Mr. Bergida was born in Brooklyn, N. Y., and lived there until moving to Belleville eight years ago. He was employed as a sales supervisor for the Colgate-Palmolive Co., Jersey City, and had been with that company for many years.  
Mr. Bergida is survived by his wife, Mrs. Helen Hackman Bergida, a son, Jay R. 15, a daughter, Felice, 19, both at home; a brother, Irving Bergida of Brooklyn, N. Y., and four sisters, Mrs. Gertrude Levine of Passaic, L. I., and Mrs. Clair Fischer, Mrs. Anna Muskat and Miss Sallie Bergida, all of Brooklyn, N. Y.  
Services were held at Gutterman's, 2239 Church Avenue, Brooklyn, N. Y.

**Mrs. Hryc Koba**  
Mrs. Mary Grana Koba of 243 Ralph Street, died at home after a six months' illness. She was 76.  
Born in Austria, Mrs. Koba came to this country in 1909, and lived a year in West Rutland, Vt., before coming to Newark.  
She was the wife of Hryc Koba, retired watchman for the Linde-

ark. They celebrated their 50th ago.  
Mrs. Koba leaves a son, Paul, of Whippany; two daughters, Mrs. Francis Lukowiak, with whom she lived, and Mrs. Frederick Wengsach of Clifton; 11 grandchildren and four great grandchildren.  
A Solemn High Requiem Mass was offered in St. John's Ukrainian Church, Newark. Funeral was from the Kiernan Funeral Home, 101 Union Avenue.

**Mrs. M. M. Carlson**  
Mrs. Nettie M. Carlson, wife of Arthur Carlson, of 60-29th Avenue, died March 11 at Presbyterian Hospital after a short illness. Mrs. Carlson had lived many years in the West Hudson-South Bergen area before moving here. Her first husband, Lawrence J. Carlson, died about 30 years ago. Mrs. Carlson was active in

many Catholic and civic affairs. She was the sister-in-law of Sister Mary Peter of Harrison, who has been stationed in a leper colony in Uganda, British East Africa. Mrs. Carlson was a member of the Rosary Society of St. Mary's Church in Nutley, St. Michael's Hospital Guild, the Belleville Red Cross Chapter and the Belleville Woman's Club.  
Surviving also are two sons, Vincent J. and Lawrence J. Rordan, both of Nutley; a sister, Miss Marie Konte of Newark, and five grandchildren.  
The funeral was from the Wadsworth Funeral Home, 524 Union Avenue, A High Requiem Mass was offered at St. Mary's Church. Burial in Holy Cross Cemetery, North Arlington.

Inquisitive people gather a lot of information that is not backed up with facts.

**WHY NOT INVEST**  
with the  
**NORTH BELLEVILLE SAVINGS & LOAN ASSOCIATION**  
500 Washington Ave., Belleville (9) N. J.  
**WE ARE NOW PAYING**  
**3% DIVIDENDS**  
Savings Insured up to \$10,000  
Federal Savings & Loan Insurance Corp.

**TAKE A SUN O-RAMA HOLIDAY TOUR NOW!**

**ASTA Happiness Tours**

7 wonderful days  
6 romantic nights  
**\$36.00**  
Rate per person, double occupancy January 1 thru Apr. 15, 1955.

**NEW SARASOTA TERRACE Hotel**  
SARASOTA, FLORIDA

**Your Florida Dream Vacation...!**  
LUXURIOUS HOTEL...JADE SWIMMING POOL

FOR LOW PACKAGE RATES...  
AND GO NOW - PAY LATER PLAN -

SEE YOUR LOCAL TRAVEL AGENT!

5 Reasons to Vacation at The SARASOTA TERRACE:  
• FREE GOLF ON 27 HOLE COURSE  
• FREE CRUISE IN GULF  
• FREE COCKTAIL PARTY  
• FREE BEACH CABANAS

**NEW SARASOTA TERRACE Hotel**  
Tel Ringling 2-5311 P.O. Box 1720 SARASOTA, FLORIDA

**Jetaway**  
means  
**GETAWAY!**



**THE SECRET OF THE SMOOTHNESS IS IN THE SECOND COUPLING!**

Jetaway features TFO fluid couplings to give you twice the smoothness! The second coupling fills and spills with jetlike speed to ease you into every driving range quietly, so smoothness the change is almost imperceptible. Just try Oldsmobile's Jetaway... it's the greatest advance in automatic transmissions in 17 years!

And how you get away! With the flashing "go" that Hydra-Matic made so famous, plus a new liquid smoothness that's Jetaway's alone. Just try Jetaway. Pour on the power! You'll see the dramatic difference when Oldsmobile's revolutionary transmission pairs with the Rocket T-350 Engine... 9.25-to-1 compression big! What's more, in this Olds you wing along in the solid assurance of its sure-footed Safety-Ride Chassis... in the smart luxury of its fashionably tailored interior. And, when it comes to looks, Oldsmobile's Starfire styling is in a class by itself with its trend-setting "Intargille Bumper." This Olds can be yours at a price that's amazingly low. Rocket round the block and send "Standard on Series Motor-Right optional at extra cost on all other series."

See our **Go! Show "Holidays for Spring"**

**OLDSMOBILE**  
— VISIT THE "ROCKET ROOM" ... AT YOUR OLDSMOBILE DEALER'S —  
**BELLEVILLE MOTORS**  
53 Washington Avenue Belleville, N. J.



**Where Shopping's A Pleasure**

Because Acme personnel is courteous . . . Acme values are better . . . Acme stores are clean . . . Acme quality is superb and . . . PRICES ARE LOW!

<b>Dairy Values</b>	<b>IDEAL TOMATO</b>
<b>VELVEETA</b>	<b>Soup</b> 12 10 1/2-oz. \$1.00 cans
KRAFT 2 lb. box 79c	<b>Pickles</b> 28-oz. jar 39c
KRAFT COLBY	<b>Beans</b> 2 21-oz. 33c cans
<b>CHEESE</b>	<b>Coronet Prune</b>
Mild and Mellow lb. 43c	<b>Juice</b> 4 32-oz. \$1.00 bottles
DOMESTIC BLUE	<b>Pears</b> 3 29-oz. \$1.00 cans
<b>Cheese</b> lb. 69c	<b>Bon-Bons</b> 8-oz. 29c pkg.
<b>Frozen Food</b>	<b>Macaroni</b> 2 16-oz. 19c pkgs.
IDEAL FROZEN ORANGE	
<b>JUICE</b>	
2 6-oz. 29c cans	

**LANCASTER BRAND—FRESH KILLED—PAN READY**

**FRYING CHICKENS** lb. 39c  
Rushed fresh to your Acme Market from nearby farms. The finest money can buy!

**CORNEED BEEF** Lancaster Brand Brisket lb. 65c  
A St. Patrick's Day Feature At All Acme's

**CHUCK ROAST** Lancaster Brand Beef lb. 33c  
Bone In! Juicy! Tender! Economical! Try this weekend! All cuts Chuck Roast One Price!

<b>LANCASTER BRAND</b>	
BEEF Boneless Brisket or Cross Cut Beef lb. 65c	
<b>LANCASTER BRAND</b>	
RIB ROAST lb. 59c	
OVEN READY . . . 7 inch cut! A meal fit for a king!	
<b>LANCASTER BRAND SLICED</b>	
BACON 8-oz. pkg. 27c	
TAYLOR	
PORK ROLL 6-oz. pkg. 29c 1 1/2-lb. Bag 99c	

**FROSTED FISH SHRIMP**  
FANCY JUMBO lb. 99c  
Tasty Jumbo delicacies . . . Wonderful for cocktails or salads!

<b>SCALLOPS</b> Taste O'Sea 7-oz. pkg. 45c	
<b>POLLOCK</b> Taste O'Sea 1-lb. pkg. 25c	

**Bakery Buys**

**PIES** each 39c  
VIRGINIA LEE LEMON

**Fruits & Vegetables**

**ORANGES** Doz. 39c  
FLORIDA VALENCIA

All natural color. Juicy . . . from Florida's finest groves!

**CABBAGE** NEW GREEN lb. 5c  
Serve Corneed Beef and Cabbage for St. Patrick's Day!

**CORN** FANCY FLORIDA 4 ears 29c  
Sweet and tender! Put summer into winter meals with fresh corn!

All advertised prices effective through Saturday March 17.